

Setup procedure

Date: March - 2007

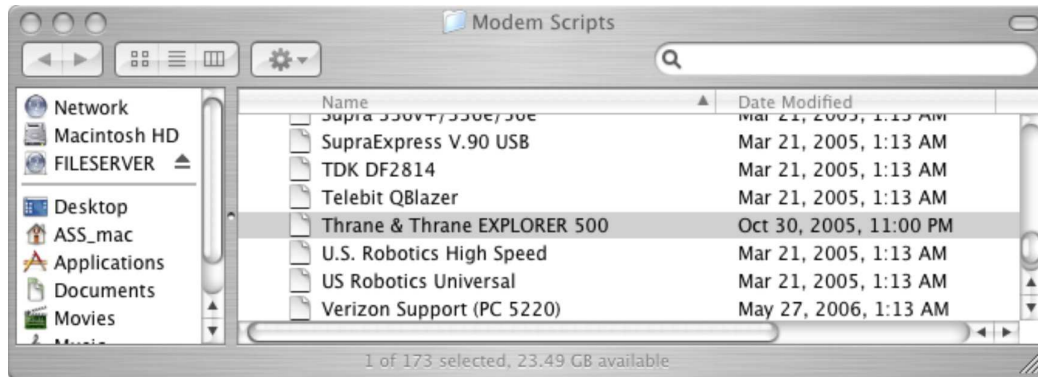
Document number: 95-125556

USB modem script on a MAC

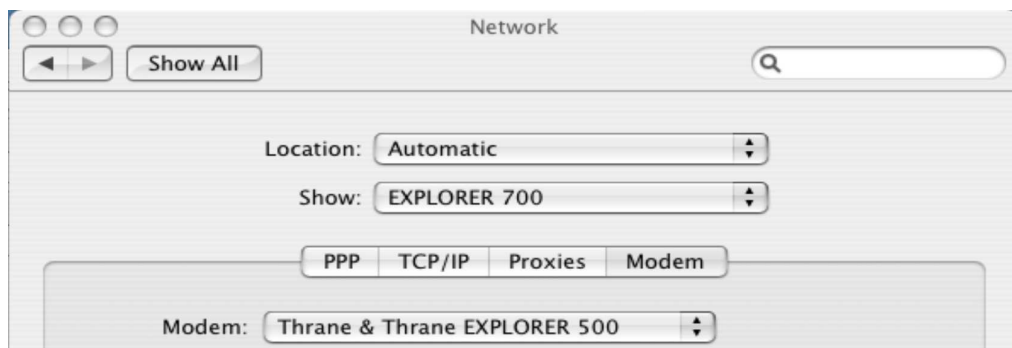
Subject:

How to install the EXPLORER® USB modem script.

1. Download the modem script from T&T extranet or
2. Copy "Thrane & Thrane EXPLORER 500" into /Library/Modem Scripts.



3. When an EXPLORER® 500 is connected it will be listed in the Network pane in System Preferences.
4. Go to the Network pane – “Show” and select EXPLORER 500/700.
5. On the modem tab select the "Thrane & Thrane EXPLORER 500".



Example with EXPLORER 700 connected

Tested on MAC OS 10.4