



Using BGAN LaunchPad on the EXPLORER 500

Version 1.0
16 May 2008

inmarsat.com/bgan

Whilst the information has been prepared by Inmarsat in good faith, and all reasonable efforts have been made to ensure its accuracy, Inmarsat makes no warranty or representation as to the accuracy, completeness or fitness for purpose or use of the information. Inmarsat shall not be liable for any loss or damage of any kind, including indirect or consequential loss, arising from use of the information and all warranties and conditions, whether express or implied by statute, common law or otherwise, are hereby excluded to the extent permitted by English law. INMARSAT is a trademark of the International Mobile Satellite Organisation, Inmarsat LOGO is a trademark of Inmarsat (IP) Company Limited. Both trademarks are licensed to Inmarsat Global Limited. © Inmarsat Global Limited 2007. All rights reserved.

Contents

Introduction	1	
1	Introducing BGAN LaunchPad on the EXPLORER 500	1
1.1	Purpose of this manual	1
1.2	Scope	1
1.3	Assumptions	1
1.4	Useful references	1
2	Menu options	2
Terminal interface settings	3	
3	Setting up the Bluetooth interface	3
3.1	Introduction	3
3.2	Connecting from your device to the terminal	3
3.3	Connecting from the terminal to your device	4
4	Setting up the Ethernet interface	5
5	Selecting multi-user or single-user mode	6
Telephony settings	7	
6	Viewing telephone numbers	7
7	Setting up call forwarding	8
8	Setting up call barring	9
9	Setting up caller ID	10
10	Setting up call waiting	11
11	Setting up incoming call quality	12
12	Setting up outgoing call quality	13
12.1	Overriding the Default Outgoing Voice Quality	13

Introduction

1 Introducing BGAN LaunchPad on the EXPLORER 500

1.1 Purpose of this manual

This document describes the functions of BGAN LaunchPad that are specific to the Thrane & Thrane EXPLORER 500.

It is intended for first time end-users, Distribution Partners, Service Providers and anyone who wants to use the EXPLORER 500 to connect to the BGAN network and manage network services using LaunchPad. A previous knowledge of satellite communications is useful, but not essential.

1.2 Scope

This document gives detailed instructions on every function or menu option available in BGAN LaunchPad that is specific to the EXPLORER 500. It does not describe how to use menu options that are common to all terminals. For this information, refer to the document "Using BGAN LaunchPad", available for download from www.inmarsat.com/support

This document also does not describe how to use specific applications over the BGAN network. For this information refer to the BGAN solutions guides and solutions sheets, available for download from www.inmarsat.com/support

1.3 Assumptions

- You have installed your EXPLORER 500, as described in the documentation supplied with your terminal.
- You have a connection already setup between the terminal and your computer.

1.4 Useful references

- Other documentation on BGAN and LaunchPad is available for download from the BGAN web site at www.inmarsat.com/support

2 Menu options

The following table shows the menu options specific to the EXPLORER 500, and where in this guide to look for information on the options. If you want information on a menu option other than those listed, refer to the supplementary guide for your particular terminal.

Menu > Sub menu	Refer to
Terminal > Bluetooth Interface Settings	"Setting up the Bluetooth interface" on page 3.
Terminal > NAT Mode	"Selecting multi-user or single-user mode" on page 6.
Terminal > Configure Ethernet	"Setting up the Ethernet interface" on page 5.
BGAN services > Telephony settings	"Viewing telephone numbers" on page 7. "Setting up call forwarding" on page 8. "Setting up call barring" on page 9. "Setting up caller ID" on page 10. "Setting up call waiting" on page 11. "Setting up incoming call quality" on page 12. "Setting up outgoing call quality" on page 13.

Terminal interface settings

3 Setting up the Bluetooth interface

3.1 Introduction

You can use the terminal's in-built Bluetooth modem to open a Bluetooth voice connection or a Bluetooth data connection. To use a Bluetooth device with the BGAN terminal, you first have to enable the Bluetooth interface in the terminal and in the device, and then pair the device with the terminal. To do this, you can either:

- Search for the terminal from your Bluetooth-enabled device, using your device's Bluetooth software. If you want to pair your device with the terminal, the default device name is "EXPLORER 500", and the default passkey is the terminal serial number. The terminal's serial number is found on the label on the back of the terminal.
- Search for your Bluetooth-enabled device from the terminal. You can do this using BGAN LaunchPad.

3.2 Connecting from your device to the terminal

The Bluetooth device must be placed within a maximum distance of 100m from the BGAN terminal. Note that this is the absolute maximum distance; the actual maximum distance may be shorter, depending on the conditions.

To pair with the terminal and open a connection using the Bluetooth software on your Bluetooth device:

- a. Make sure the Bluetooth interface in the terminal is enabled (the interface is enabled by default). You can do this using one of the following methods:
 - From the terminal's display and keypad.
From the display menu, select **SETTINGS > INTERFACES**, select **BLUETOOTH**, and make sure the interface is **ON**.
 - From a Bluetooth-enabled computer using BGAN LaunchPad.
You must be connected to the terminal via the LAN or USB interface. From the BGAN LaunchPad main menu, select **Terminal > Bluetooth Interface Settings** to display the **Configure Bluetooth Interface** dialog box. Make sure the **Enable** radio button is selected, and click **OK**.
 - From a Bluetooth-enabled computer using the terminal's Web interface.
You must be connected to the terminal via the LAN interface or USB interface. Type in **192.168.0.1** into a Web browser to display the Web interface. For information on using the Web interface, refer to the "EXPLORER 500 User Manual".
- b. Enable your Bluetooth device, and search for devices in range. The terminal's default Device Name is EXPLORER 500.
- c. Enter the terminal's passkey when prompted to pair with the terminal. By default, the passkey is the terminal's serial number, which you can find on the label on the back of the terminal (with the prefix S/N). When you have paired the device and the terminal, the Bluetooth software automatically installs two Bluetooth modems on your computer, one for BGAN LaunchPad and one for dial-up networking.
- d. Open BGAN LaunchPad. BGAN LaunchPad automatically detects the Bluetooth connection and you can use your device to access Bluetooth services.

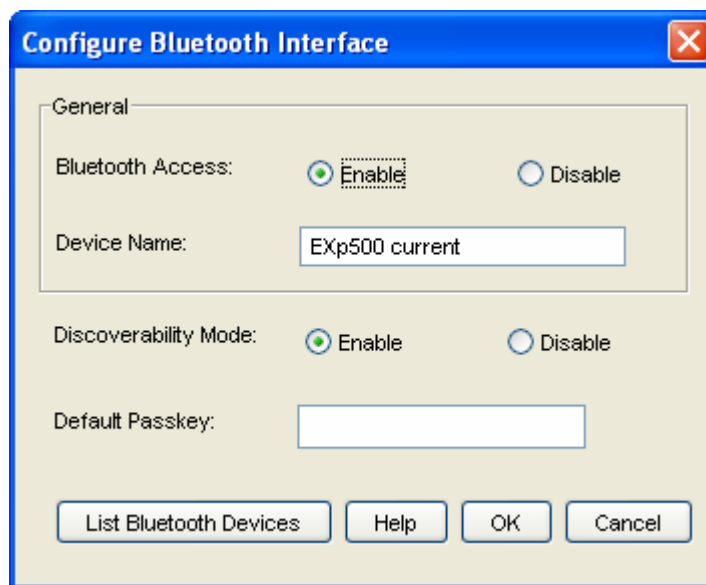
Tip: If you want to open an IP data connection over Bluetooth using BGAN LaunchPad, you must un-pair from all other devices, so that your computer is paired only with the BGAN terminal. You can now open BGAN LaunchPad and access terminal services over BGAN LaunchPad.

3.3 Connecting from the terminal to your device

The Bluetooth device must be placed within a maximum distance of 100m from the BGAN terminal. Note that this is the absolute maximum distance; the actual maximum distance may be shorter, depending on the conditions.

To search for and pair with your Bluetooth-enabled device from the terminal using BGAN LaunchPad:

- a. From BGAN LaunchPad main menu, select **Terminal > Bluetooth Interface Settings**. The **Configure Bluetooth Interface** dialog box is displayed, as shown below:



- b. If the Bluetooth interface is not enabled, select the **Enable** radio button.

Note: The Bluetooth device that you want to pair with must also be enabled.

- c. Click on **List Bluetooth Devices** to list all Bluetooth devices within range. A screen similar to the following is displayed, giving the device address and current status, including pairing information.

Friendly Name	Device Address	Device Class	Status
EXPLORER 500	00:11:CF:00:A7:F9	Cordless	In-Range - Not Paired
INMARSAT-B03380	00:1A:6B:B3:8F:85	Laptop	In-Range - Not Paired
EXp500 current	00:11:CF:00:9C:EB	Cordless	In-Range - Not Paired
NOC01	00:11:CF:00:9C:FB	Cordless	In-Range - Not Paired
EXPLORER 700_yajju	00:11:CF:00:9B:23	Cordless	In-Range - Not Paired
	00:11:CF:00:D9:09	Cordless	In-Range - Not Paired

d. If required, either:

- Pair a device by right-clicking on an unpaired device and selecting **Pair**. Enter the passkey when prompted, or
- Unpair a device by right-clicking on a paired device and selecting **Un-pair**.

e. Click on **OK** to save the configured settings, or click on **Cancel** to exit without saving. When you have paired the device and the terminal, the Bluetooth software automatically installs two Bluetooth modems on your computer, one for BGAN LaunchPad and one for dial-up networking.

f. BGAN LaunchPad automatically detects the Bluetooth connection and you can use your device to access Bluetooth services.

You cannot make a local call between two Bluetooth handsets using the EXPLORER 500. You can make a local call from a Bluetooth handset or headset to an analogue phone, or from an analogue phone to a Bluetooth handset or headset.

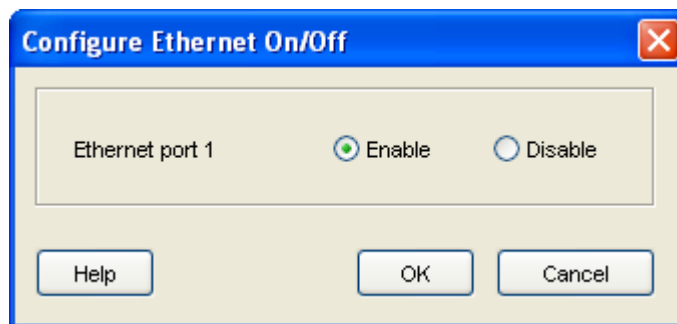
You can look up the local Bluetooth phone numbers using the terminal's display and keypad. To do this, select **PROPERTIES > BLUETOOTH DEVICES > DISPLAY** from the terminal's display. The list shows all accepted Bluetooth devices with local number and Bluetooth name.

Tip: If you want to open an IP data connection over Bluetooth using BGAN LaunchPad, you must un-pair from all other devices, so that your computer is paired only with the BGAN terminal. You can now open BGAN LaunchPad and access terminal services across the Bluetooth connection.

4 Setting up the Ethernet interface

You can turn the Ethernet interface on or off. To do this:

- a. From BGAN LaunchPad main menu, select **Terminal > Configure Ethernet**. The following screen displays:



- b. Select **Enable** to enable the Ethernet interface, or **Disable** to disable the interface.
- c. Click on **OK** to save the setting, or click on **Cancel** to exit without saving.

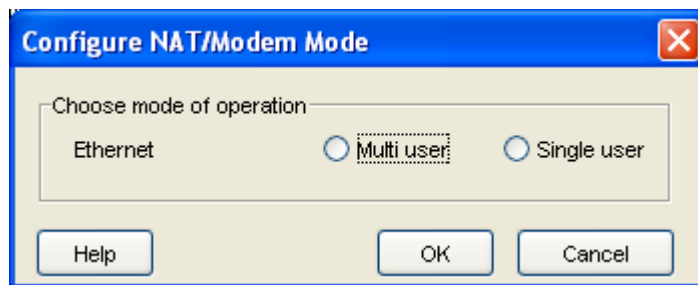
5 Selecting multi-user or single-user mode

IP data connections operate differently depending on whether you are in Multi user mode or Single user mode:

- If the terminal is operating in multi user mode, and multiple users are connected to the Ethernet interface over a hub or switch, all users share the standard or streaming IP data connection. Only one session of BGAN LaunchPad is required. Other users can open a dedicated connection, if required.
- If the terminal is operating in single user mode, and multiple users are connected to the Ethernet interface over an external router, only one user can request a standard or streaming IP connection. Dedicated connections are not supported.

To set the terminal to operate in multi-user mode or single-user mode:

- a. From BGAN LaunchPad main menu, select **Terminal > NAT Mode**. The following screen displays:



- b. Select **Multi user** or **Single user**, as required.
- c. Click on **OK** to save the settings, or click on **Cancel** to exit without saving.

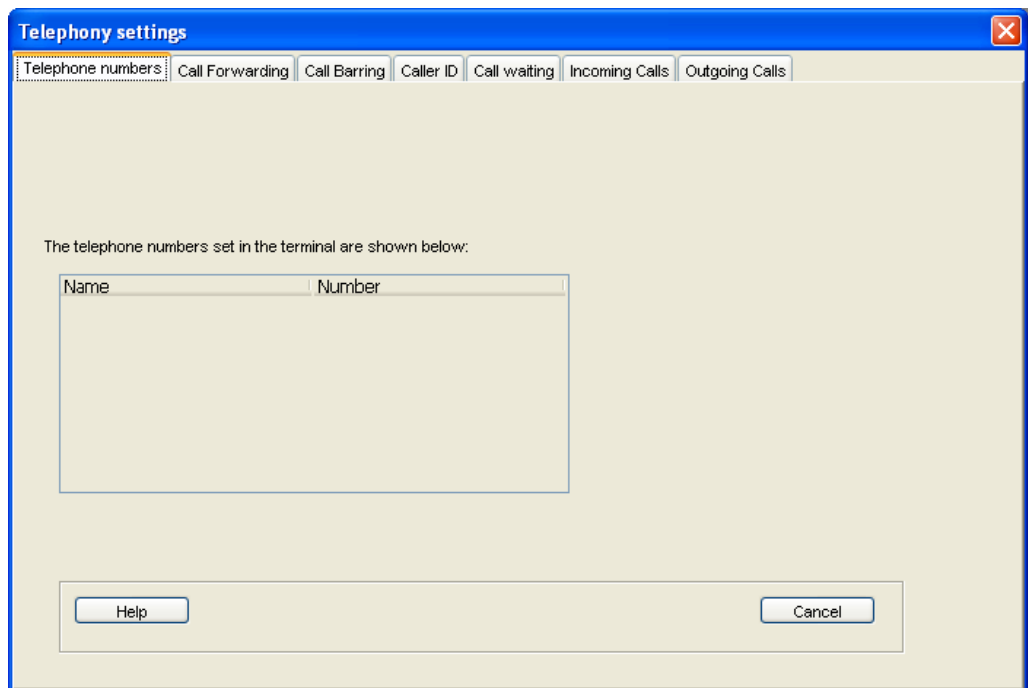
Telephony settings

You can use BGAN LaunchPad to set up phone settings such as call forwarding and call barring. Each of the available options are described in the following sections.

6 Viewing telephone numbers

You can display the terminal's telephone numbers and ISDN numbers in BGAN LaunchPad, if they have been supplied by your service provider. To do this:

- a. From the BGAN LaunchPad main menu, select **BGAN services > Telephony Settings**: (You can also click on **Advanced** in the Phone window). The Telephony Settings window displays.
- b. Select the **Telephone numbers** tab. The following window displays:



- c. The telephone numbers and ISDN numbers available to you are displayed in the **Telephone numbers** tab.

7 Setting up call forwarding

You can forward incoming calls to another phone using the Call Forwarding options.

To select call forwarding options:

- From the BGAN LaunchPad main menu, select **BGAN services > Telephony Settings**: (You can also click on **Advanced** in the Phone window). The Telephony Settings window displays.
- Select the **Call Forwarding** tab. The following window displays:

The screenshot shows the 'Telephony settings' window with the 'Call Forwarding' tab selected. At the top, there is a dropdown menu set to 'Voice'. Below this, there are four rows of settings, each with a 'Disable' radio button, an 'Enable' radio button, and a text input field for 'Divert To Number:-'. The first row is 'Divert all calls', the second is 'Divert if busy', the third is 'Divert if not answered', and the fourth is 'Divert if out of reach'. To the right of the 'Divert if not answered' row, there is a 'Seconds Unanswered' dropdown menu set to '5'. Each row has an 'Apply' button to its right. At the bottom center, there is a 'Current values' button. At the bottom left, there is a 'Help' button, and at the bottom right, there is a 'Cancel' button.

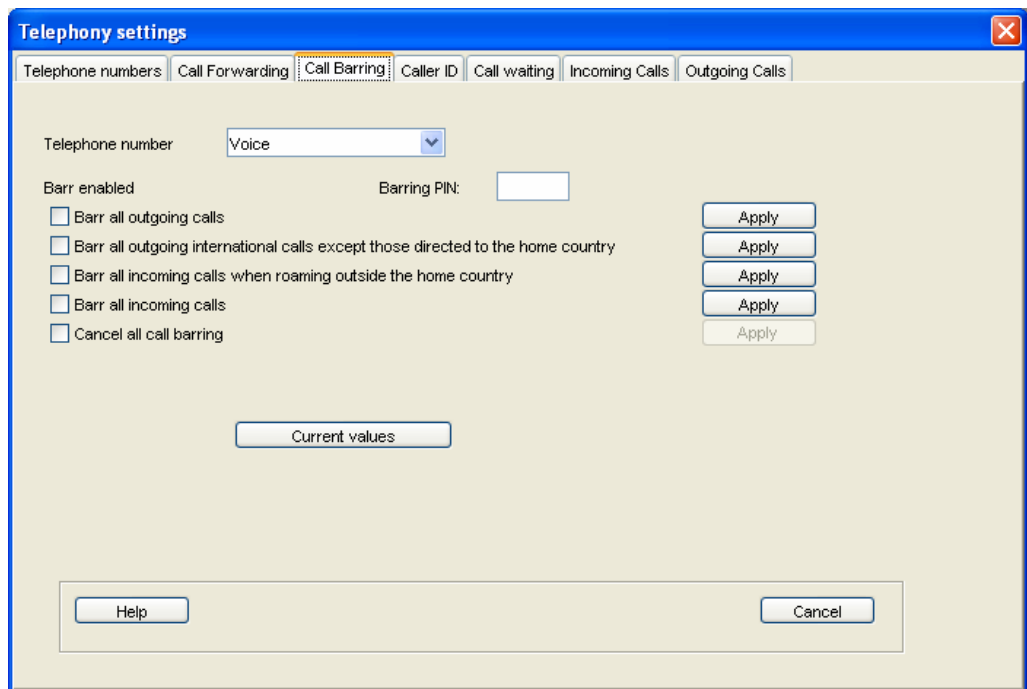
- From the drop-down list, select the service on which you want to set up call forwarding, either **Voice, Data** or **Fax**.
- Select **Enable** or **Disable** for each call forwarding option as required. If you enable a call forwarding option, enter the number of the telephone to which you want to forward the call in the text box alongside your selection. If you select **Divert if not answered**, enter the amount of time you want the phone to ring unanswered before the call is diverted, in the **Seconds unanswered** text box.
- If required, click on **Current Values** to display the current network settings for this service.
- Click on **Apply** to save the displayed configuration, and select another Phone settings tab, click on **Save** to save the displayed configuration and exit the Phone settings screen, or click on **Cancel** to exit without saving.

8 Setting up call barring

You can bar selected types of outgoing or incoming call using the Call Barring options. Before you can do this, you must enter the PIN supplied by your Service Provider.

To select call barring options:

- From the BGAN LaunchPad main menu, select **BGAN services > Telephony Settings**: (You can also click on **Advanced** in the Phone window). The Telephony Settings window displays.
- Select the **Call Barring** tab. The following window displays:



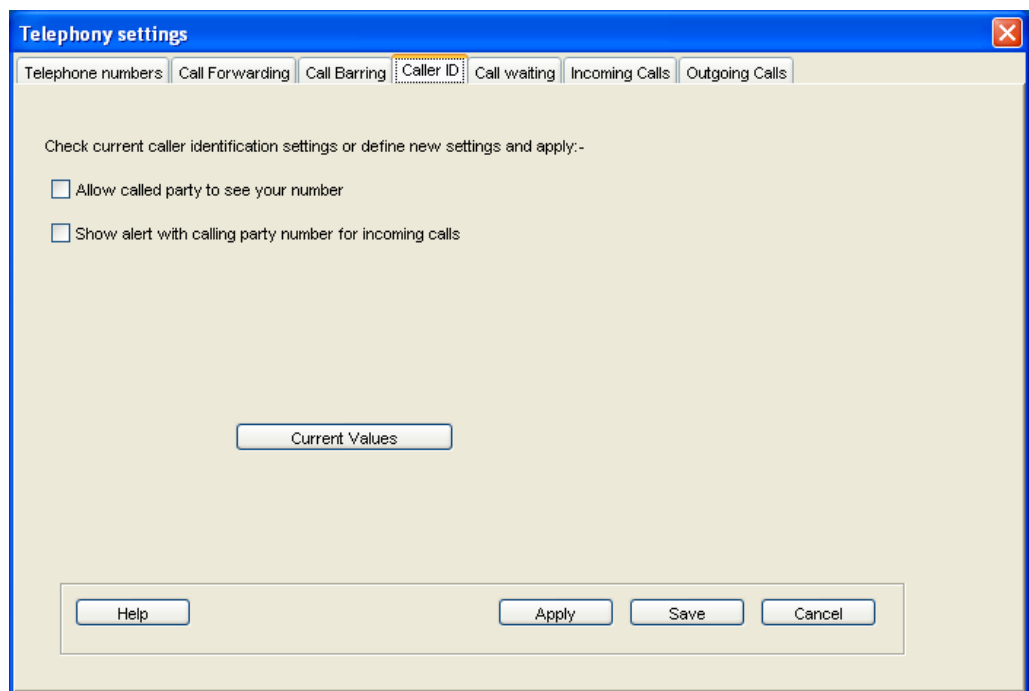
- In the **Telephone number** drop-down list, select the service on which you want to set up call barring: either **Voice**, **Data** or **Fax**.
- In the **Barring PIN** text box, enter the PIN supplied by your Service Provider. You cannot set up call barring options unless you enter the correct PIN.
- Check the check box if you want to activate a call barring service. If you choose **Cancel all call barring**, no other services are available to you. You must uncheck this box again to have access to the other services.
- If required, click on **Current Values** to display the current network settings for this service.
- Click on **Apply** to save the displayed configuration, and select another Phone settings tab, click on **Save** to save the displayed configuration and exit the Phone settings screen, or click on **Cancel** to exit without saving.

9 Setting up caller ID

You can enable caller ID if you want to see the number of an incoming caller, or allow a caller to see your number.

To set up caller ID:

- a. From the BGAN LaunchPad main menu, select **BGAN services > Telephony Settings**: (You can also click on **Advanced** in the Phone window). The Telephony Settings window displays.
- b. Select the **Call Barring** tab. The following window displays:



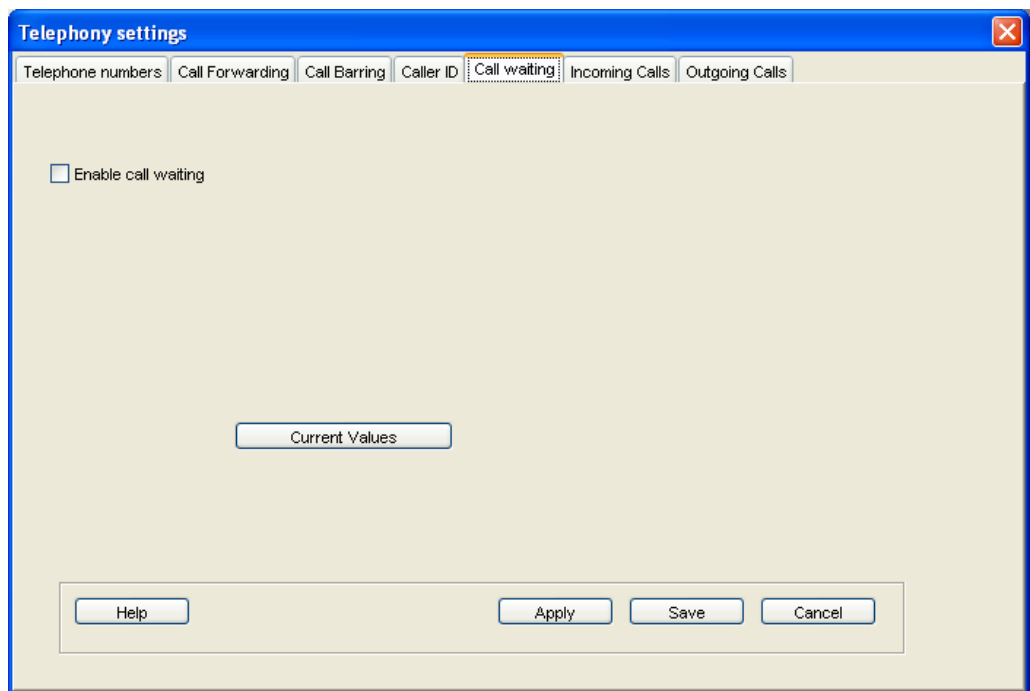
- c. Check the **Allow Called Party to see your number** check box if you want to allow the caller to see your number.
- d. Check the **Show alert with calling party number for incoming calls** check box if you want to see the number of an incoming caller.
- e. If required, click on **Current Values** to display the current network settings for this service.
- f. Click on **Apply** to save the displayed configuration, and select another Phone settings tab, click on **Save** to save the displayed configuration and exit the Phone settings screen, or click on **Cancel** to exit without saving.

10 Setting up call waiting

You can enable call waiting if you want to be notified that another caller is waiting which you are on a call.

To set up call waiting:

- a. From the BGAN LaunchPad main menu, select **BGAN services > Telephony Settings**: (You can also click on **Advanced** in the Phone window). The Telephony Settings window displays.
- b. Select the **Call Waiting** tab. The following window displays:



- c. Check the **Enable Call Waiting** check box to activate call waiting, or uncheck the check box to turn call waiting off.
- d. If required, click on **Current Values** to display the current network settings for this service.
- e. Click on **Apply** to save the displayed configuration, and select another Phone settings tab, click on **Save** to save the displayed configuration and exit the Phone settings screen, or click on **Cancel** to exit without saving.

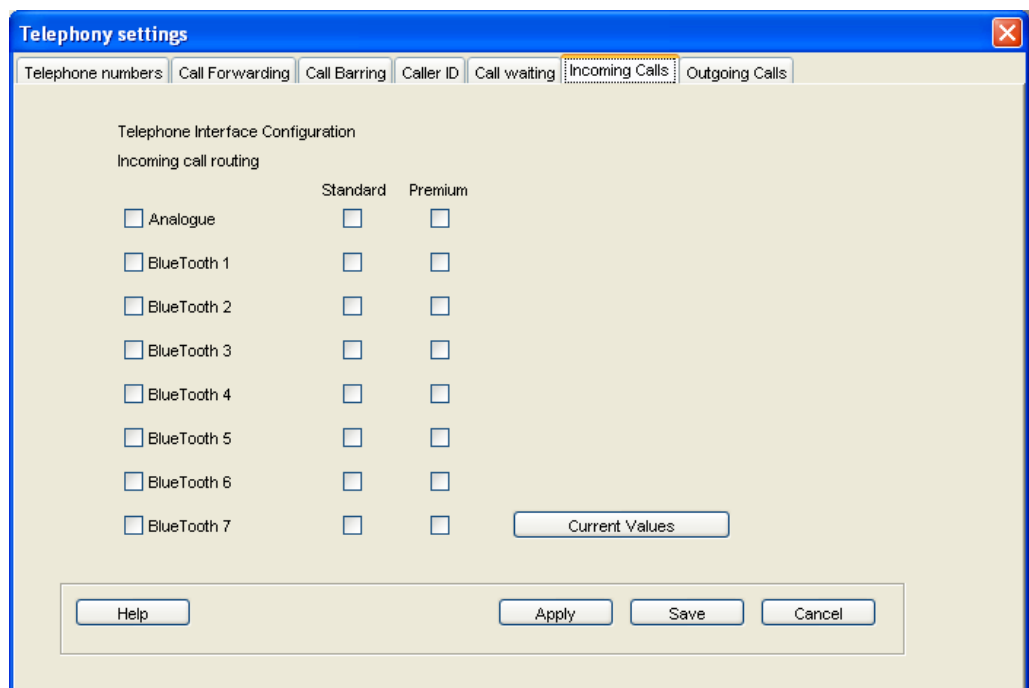
11 Setting up incoming call quality

Premium voice and Standard voice have separate phone numbers. This way, a person calling a phone connected to the BGAN terminal can select whether to use Premium or Standard voice, simply by using one of the two phone numbers. To view the phone numbers for Standard voice and Premium voice, select **PROPERTIES > MOBILE NUMBERS** in the display menu system. The numbers are listed under Mobile numbers.

You can also set the default call quality for the analogue interface and each Bluetooth interface using the **Incoming Calls** tab, as described below.

To select the default voice quality for incoming calls, do the following in BGAN LaunchPad:

- From the main menu, select **BGAN Services > Telephony Settings**. (You can also click on **Advanced** in the Phone window). The Telephony Settings window displays.
- Select the **Incoming Calls** tab. The following window displays:



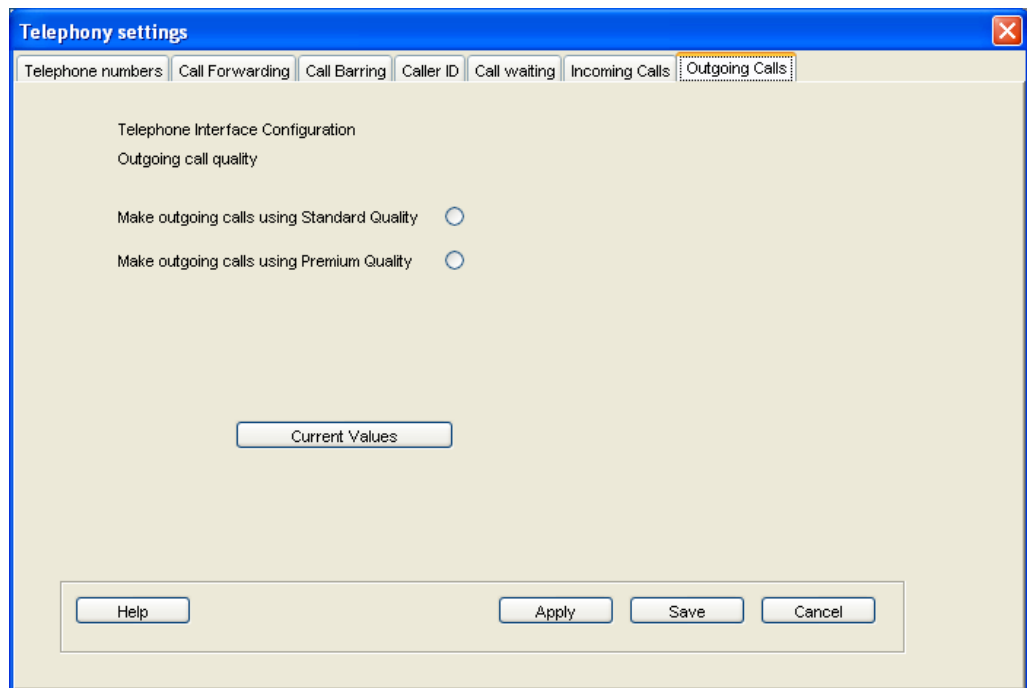
- Check the **Standard** or **Premium** check box for each interface, or check both check boxes. For example, to set the phone/fax interface to Premium, check the Premium check box on the Analogue row. Up to seven Bluetooth handsets can be connected. Remember to set the voice quality for each required handset.
- Click on **Apply** to save the settings and continue editing the Telephony Settings screen, click **Save** to save the settings and close the screen down, or click **Cancel** to exit without saving.

12 Setting up outgoing call quality

The phone connection can be either a Standard voice connection or a Premium voice connection. In BGAN LaunchPad, you can set up which type of connection to use as default when you make or receive a call from the phone/fax interface or the Bluetooth interface.

To select the default voice quality for outgoing calls, do the following in BGAN LaunchPad:

- a. From the main menu, select **BGAN Services > Telephony Settings**. The **Telephony Settings** screen displays.
- b. Select the **Outgoing Calls** tab. The following screen displays:



- c. Check either **Make outgoing calls using Standard Quality** or **Make outgoing calls using Premium Quality**.
- d. Click on **Apply** to save the settings and continue editing the Telephony Settings screen, click **Save** to save the settings and close the screen down, or click **Cancel** to exit without saving.

12.1 Overriding the Default Outgoing Voice Quality

To override the default setting for a specific outgoing call, do the following on the handset:

- To use the Standard voice connection for the call, dial **1*** before the number.
- To use the Premium voice connection for the call, dial **2*** before the number.

Example: To make a call to Thrane & Thrane in Denmark (+45 39558800), forcing the connection to be Standard voice, dial: **1* 0045 39558800** followed by **#** if calling from an analogue phone, or off-hook key if calling from a Bluetooth handset.

Note: This does not change the default voice quality, but only the quality of the call in progress.