



Using BGAN LaunchPad on the SABRE I

Version 1.0
16 May 2008

inmarsat.com/bgan

Whilst the information has been prepared by Inmarsat in good faith, and all reasonable efforts have been made to ensure its accuracy, Inmarsat makes no warranty or representation as to the accuracy, completeness or fitness for purpose or use of the information. Inmarsat shall not be liable for any loss or damage of any kind, including indirect or consequential loss, arising from use of the information and all warranties and conditions, whether express or implied by statute, common law or otherwise, are hereby excluded to the extent permitted by English law. INMARSAT is a trademark of the International Mobile Satellite Organisation, Inmarsat LOGO is a trademark of Inmarsat (IP) Company Limited. Both trademarks are licensed to Inmarsat Global Limited. © Inmarsat Global Limited 2007. All rights reserved.

Contents

Introduction	1	
1	Introducing BGAN LaunchPad on the SABRE I	1
1.1	Purpose of this manual	1
1.2	Scope	1
1.3	Assumptions	1
1.4	Useful references	1
2	Menu options	2
Terminal interface settings	3	
3	Setting up the Bluetooth interface	3
3.1	Introduction	3
3.2	Connecting from your device to the terminal	3
4	Setting up the Ethernet interface	5
Managing the terminal	7	
5	Enabling or disabling audio	7
Telephony settings	8	
6	Viewing telephone numbers	8
7	Setting up call forwarding	9
8	Setting up call barring	10
9	Setting up caller ID	11
10	Setting up call waiting	12
11	Setting up interface status	13

Introduction

1 Introducing BGAN LaunchPad on the SABRE I

1.1 Purpose of this manual

This document describes the functions of BGAN LaunchPad that are specific to the Wideye™ SABRE 1.

It is intended for first time end-users, Distribution Partners, Service Providers and anyone who wants to use the SABRE 1 to connect to the BGAN network and manage network services using LaunchPad. A previous knowledge of satellite communications is useful, but not essential.

1.2 Scope

This document gives detailed instructions on every function or menu option available in BGAN LaunchPad that is specific to the SABRE 1. It does not describe how to use menu options that are common to all terminals. For this information, refer to the document "Using BGAN LaunchPad", available for download from www.inmarsat.com/support

This document also does not describe how to use specific applications over the BGAN network. For this information refer to the BGAN solutions guides and solutions sheets, available for download from www.inmarsat.com/support

1.3 Assumptions

- You have installed your SABRE 1, as described in the documentation supplied with your terminal.
- You have a connection already setup between the terminal and your computer.

1.4 Useful references

- Other documentation on BGAN and LaunchPad is available for download from the BGAN web site at www.inmarsat.com/support

2 Menu options

The following table shows the menu options specific to the SABRE I, and where in this guide to look for information on the options. If you want information on a menu option other than those listed, refer to the supplementary guide for your particular terminal.

Menu > Sub menu	Refer to
Terminal > Bluetooth Interface Settings	"Setting up the Bluetooth interface" on page 3.
Terminal > Ethernet Configuration	"Setting up the Ethernet interface" on page 5.
Terminal > Audio	"Enabling or disabling audio" on page 7.
BGAN services > Telephony settings	"Viewing telephone numbers" on page 8.
	"Setting up call forwarding" on page 9.
	"Setting up call barring" on page 10.
	"Setting up caller ID" on page 11.
	"Setting up call waiting" on page 12.
	"Setting up interface status" on page 13

Terminal interface settings

3 Setting up the Bluetooth interface

3.1 Introduction

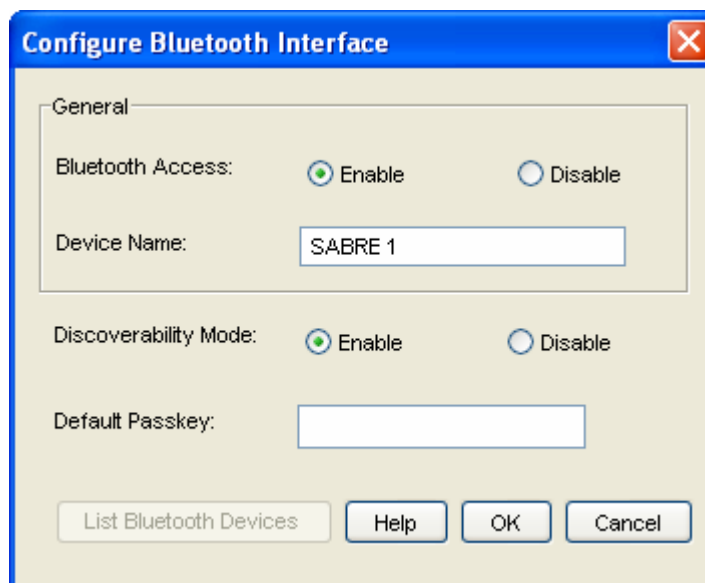
Note the following about Bluetooth connections on the SABRE I:

- You can connect a Bluetooth handset, a Bluetooth headset or a Bluetooth data device to the built-in Bluetooth antenna on the terminal. One device at a time can connect to the Bluetooth interface.
- The terminal supports various Bluetooth profiles. Remember to activate/install the profile(s) you are going to use on your computer. For a list of supported profiles, refer to the documentation supplied with your terminal.
- The Product CD supplied with the terminal contains a driver for the Wideye Bluetooth Data Dongle (not supplied). You can use this dongle if you do not already have a Bluetooth application installed on your computer. Refer to the SABRE I User Manual for details on installing the driver for the Bluetooth data dongle.
- The Bluetooth device should be placed within a maximum distance of 100 m from the terminal. Note that this is the maximum distance in open air; the actual distance may be shorter, depending on the environment. In an office environment, you should be able to establish a connection to an adjoining room.

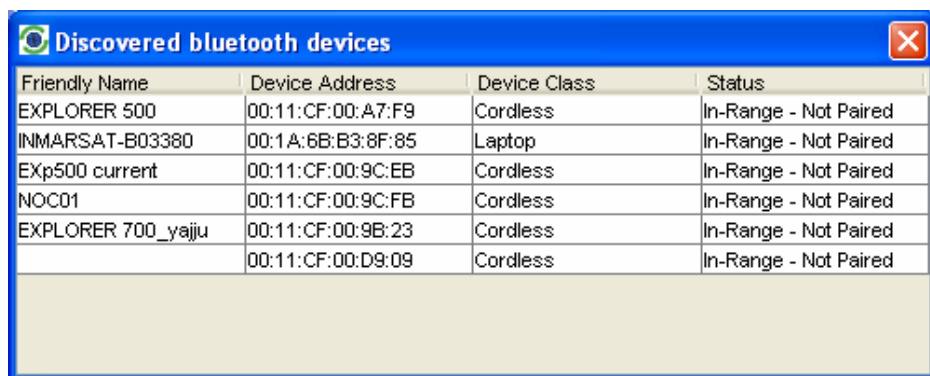
3.2 Connecting from your device to the terminal

To set up the Bluetooth interface on the BGAN terminal, do the following:

- a. Switch on your Bluetooth device, and if required enable Bluetooth.
- b. From BGAN LaunchPad main menu, select **Terminal > Bluetooth Interface Settings**. The **Configure Bluetooth Interface** dialog box displays, as shown below:



- c. To enable Bluetooth Access, select the **Enable** radio button. Note the following:
- The device name of the terminal is listed in the **Device Name** text box. The default is Lotus, but you can change this if required.
 - The current discoverability mode is displayed as either **Enable** or **Disable**. You can change this is required.
 - The current passkey displays as encrypted text in the **Default Passkey** text box. The default is 0000, but you can change this if required.
- d. If you want to list all Bluetooth devices in range, click on **List Bluetooth Devices**. A screen similar to the following displays, giving the Bluetooth Device Name, the device address and current status, including pairing information.



Friendly Name	Device Address	Device Class	Status
EXPLORER 500	00:11:CF:00:A7:F9	Cordless	In-Range - Not Paired
INMARSAT-B03380	00:1A:6B:B3:8F:85	Laptop	In-Range - Not Paired
Exp500 current	00:11:CF:00:9C:EB	Cordless	In-Range - Not Paired
NOC01	00:11:CF:00:9C:FB	Cordless	In-Range - Not Paired
EXPLORER 700_yajju	00:11:CF:00:9B:23	Cordless	In-Range - Not Paired
	00:11:CF:00:D9:09	Cordless	In-Range - Not Paired

- e. If required, either:
- To pair a device, right-click on an unpaired device, and select **Pair**. Enter the passkey when prompted. Or:
 - To unpair a device, right-click on a paired device, and select **Un-pair**.
- f. Close the **Discovered Bluetooth Devices** screen, and click on **OK** to save the configured settings, or click on **Cancel** to exit without saving.

When the devices have been paired, do the following to connect:

- Power up your data unit and the BGAN terminal.
- Place the data unit close to the BGAN terminal.
- Turn on Bluetooth on your device.

If the devices are paired, the Bluetooth connection should now be established.

Note: If your Bluetooth connection is defined as a dial-up connection, you must open the dial-up connection before you can access the internet.

Note: If connection fails, check that the interface is on in the BGAN terminal. If the Bluetooth icon is not present in the display Main screen, the interface is off.

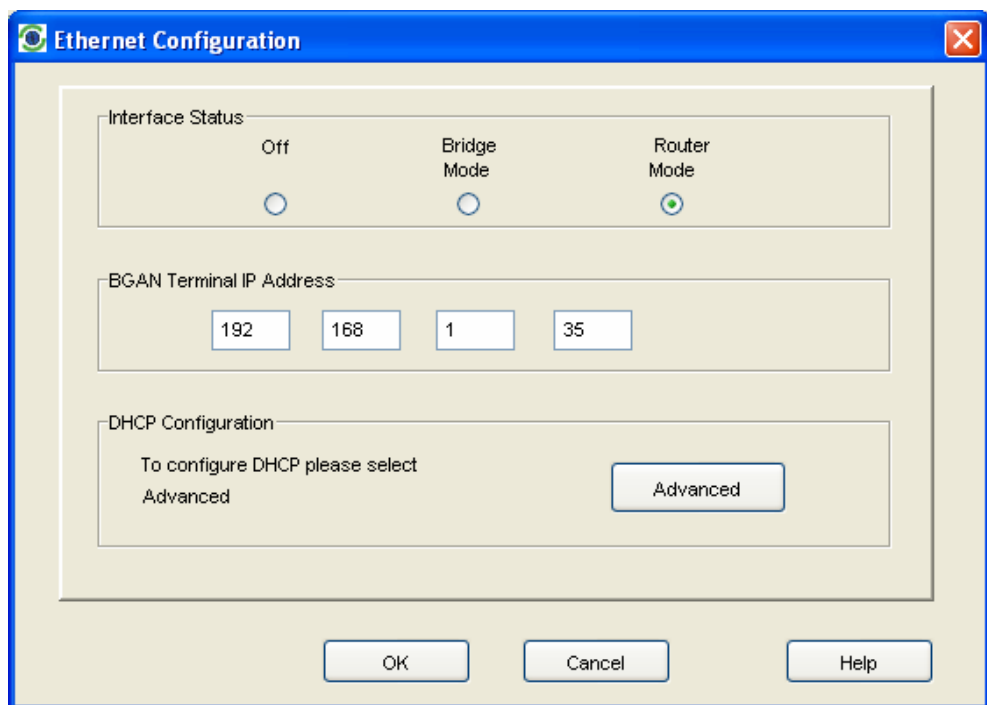
4 Setting up the Ethernet interface

The Ethernet interface of the SABRE I supports two operating modes:

- **Router Mode** - This is the default mode. This mode uses standard TCP/IP over Ethernet to connect to the network. If you choose this mode, the terminal initially assigns an IP address to the connected device, then allocates a public IP address.
- **Bridge Mode** - This mode requires you to install device drivers on your computer to create a serial connection. If you choose this mode, the core network allocates a public IP address directly to your computer (or other connected equipment). Refer to the documentation supplied with your terminal for details on installing the device drivers.

To activate and configure the Ethernet interface, do the following from BGAN LaunchPad:

- a. Click on **Terminal > Configure Ethernet**. The Ethernet Configuration screen is displayed, as shown below:



- b. To enable the Ethernet interface, select the mode you want to use. This can be either **Bridge Mode** or **Router Mode**. Alternatively, you can switch the Ethernet interface **Off**.
 - In **Router Mode**, the SABRE I acts as a router, first allocating a private IP address to the connected equipment, and then allocating a public IP address.
 - In **Bridge Mode**, the SABRE I acts as a modem, and the external network directly allocates a public IP address to the connected equipment.
- c. The BGAN Terminal IP address information is displayed. The default IP address of the terminal is **192.168.1.35**. If required, you can change this by typing in a new IP address.
- d. If you want to set up DHCP and DNS Server information, click on **Advanced**. Alternatively, click on **OK** to save any changes and exit, or click on **Cancel** to exit without saving.

e. If you click on **Advanced**, the following screen is displayed:

The screenshot shows the DHCP Configuration dialog box. The title bar is blue and contains the text "DHCP Configuration" and a close button. The dialog is divided into three main sections:

- DHCP Server:** Contains two radio buttons, "On" (which is selected) and "Off".
- DHCP Address Range:** Contains two rows of four text input fields each. The "From" row contains the values 192, 168, 1, and 30. The "To" row contains the values 192, 168, 1, and 50.
- DNS Servers:** Contains two rows of four text input fields each. The "1st" row contains the values 172, 30, 66, and 7. The "2nd" row contains the values 172, 30, 34, and 7.

At the bottom of the dialog are three buttons: "OK", "Cancel", and "Help".

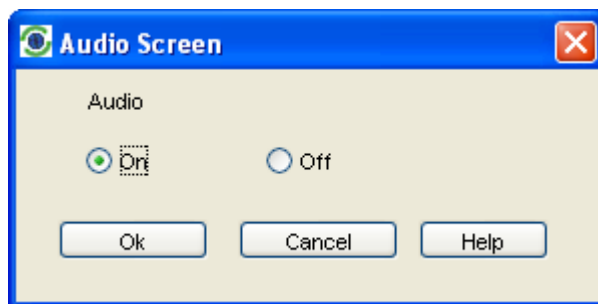
- f. Turn the DHCP Server **On**, if required. The screen displays the current DHCP Address Range, and the IP addresses of the 1st and, if required, 2nd DNS Server.
- g. If required, edit the DHCP address range by typing in a new start IP address in the **From** fields, and a new end IP address in the **To** fields.
- h. If you chose **Router Mode**, and you are using a DNS Server with a static IP address, you can change the IP address of the DNS Server. Type in the IP address of the 1st, and, if required, the 2nd DNS Server.
- i. Click on **OK** to save any changes and exit, or click on **Cancel** to exit without saving.

Managing the terminal

5 Enabling or disabling audio

The terminal has a built in audio buzzer which you can use to assist you in pointing the terminal. To turn the audio buzzer on or off:

- a. From the BGAN LaunchPad main menu, select **Terminal > Audio**. The **Audio Screen** displays:



- b. Click either the **On** or **Off** radio button to switch the audio buzzer on or off as required.
- c. Click on **OK** to save the setting, or **Cancel** to exit without saving.

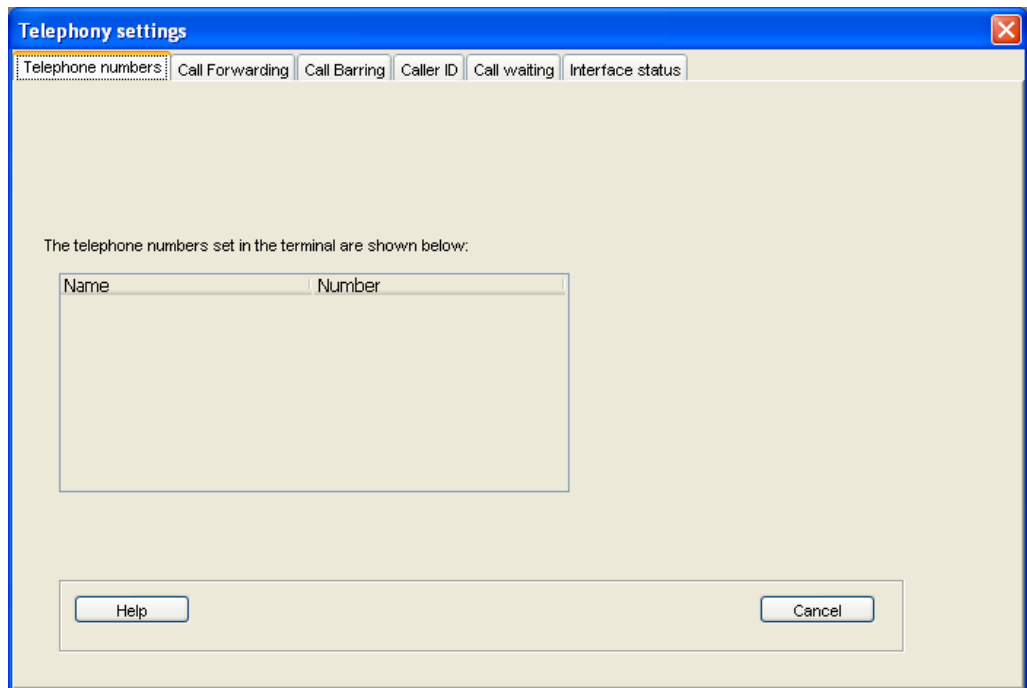
Telephony settings

You can use BGAN LaunchPad to set up phone settings such as call forwarding and call barring. Each of the available options are described in the following sections.

6 Viewing telephone numbers

You can display the terminal's telephone numbers and ISDN numbers in BGAN LaunchPad, if they have been supplied by your service provider. To do this:

- a. From the BGAN LaunchPad main menu, select **BGAN services > Telephony Settings**: (You can also click on **Advanced** in the Phone window). The Telephony Settings window displays.
- b. Select the **Telephone numbers** tab. The following window displays:



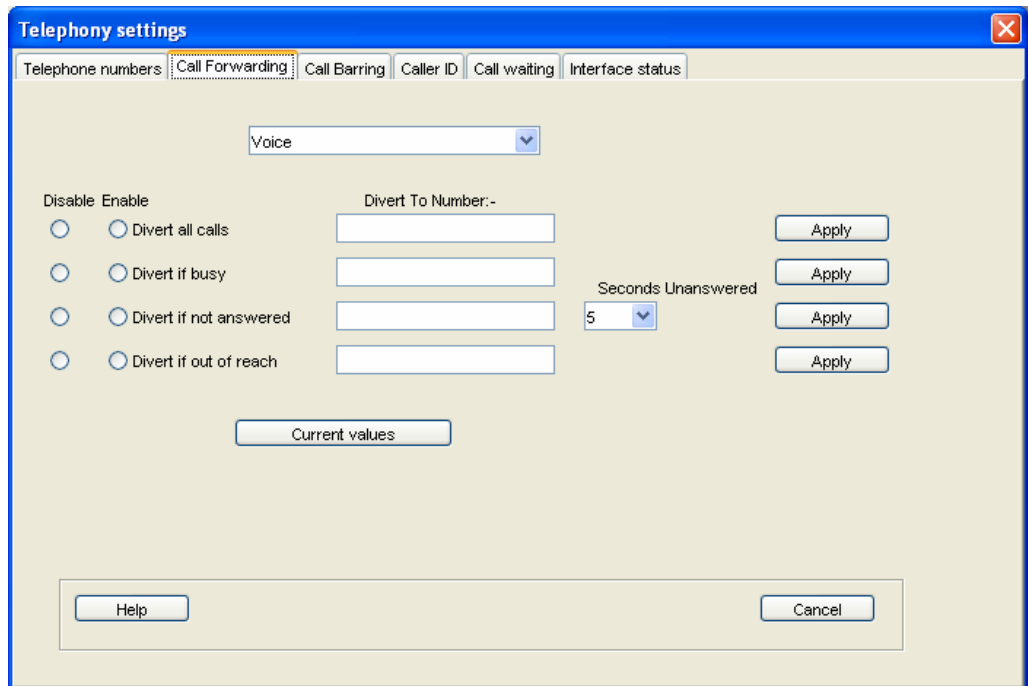
- c. The telephone numbers and ISDN numbers available to you are displayed in the **Telephone numbers** tab.

7 Setting up call forwarding

You can forward incoming calls to another phone using the Call Forwarding options.

To select call forwarding options:

- a. From the BGAN LaunchPad main menu, select **BGAN services > Telephony Settings**: (You can also click on **Advanced** in the Phone window). The Telephony Settings window displays.
- b. Select the **Call Forwarding** tab. The following window displays:



The screenshot shows the 'Telephony settings' window with the 'Call Forwarding' tab selected. At the top, there are tabs for 'Telephone numbers', 'Call Forwarding', 'Call Barring', 'Caller ID', 'Call waiting', and 'Interface status'. Below the tabs is a dropdown menu set to 'Voice'. The main area contains four rows of settings, each with a 'Disable' radio button, an 'Enable' radio button, a 'Divers To Number:-' text box, and an 'Apply' button. The first row is 'Divers all calls'. The second row is 'Divers if busy'. The third row is 'Divers if not answered', with a 'Seconds Unanswered' dropdown menu set to '5'. The fourth row is 'Divers if out of reach'. Below these rows is a 'Current values' button. At the bottom of the window are 'Help' and 'Cancel' buttons.

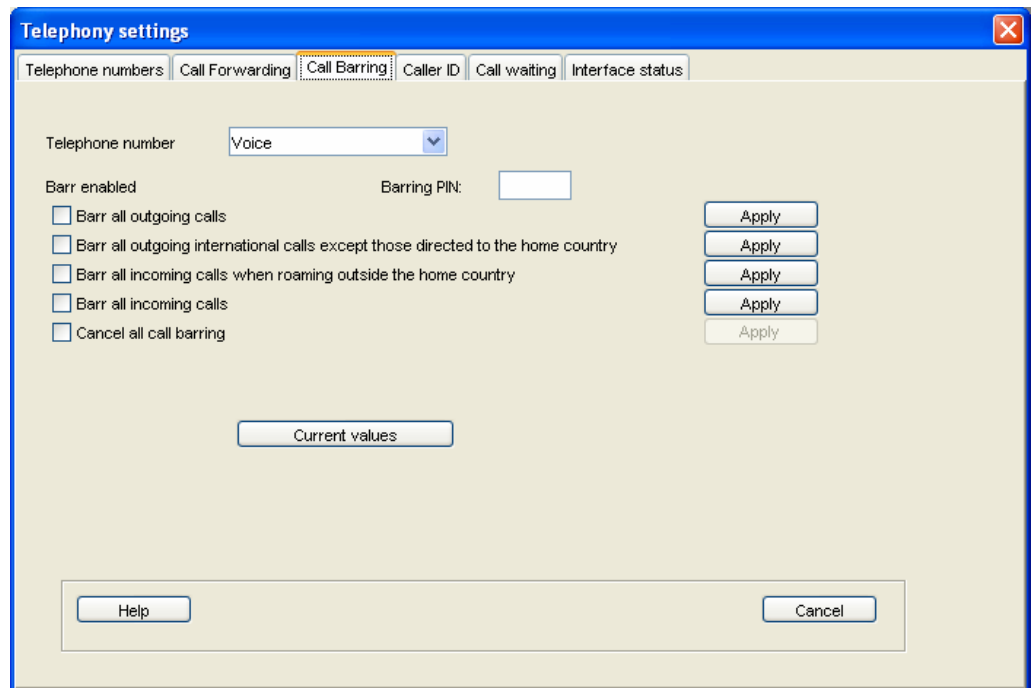
- c. From the drop-down list, select the service on which you want to set up call forwarding, either **Voice**, **Data** or **Fax**.
- d. Select **Enable** or **Disable** for each call forwarding option as required. If you enable a call forwarding option, enter the number of the telephone to which you want to forward the call in the text box alongside your selection. If you select **Divers if not answered**, enter the amount of time you want the phone to ring unanswered before the call is diverted, in the **Seconds unanswered** text box.
- e. If required, click on **Current Values** to display the current network settings for this service.
- f. Click on **Apply** to save the displayed configuration, and select another Phone settings tab, click on **Save** to save the displayed configuration and exit the Phone settings screen, or click on **Cancel** to exit without saving.

8 Setting up call barring

You can bar selected types of outgoing or incoming call using the Call Barring options. Before you can do this, you must enter the PIN supplied by your Service Provider.

To select call barring options:

- a. From the BGAN LaunchPad main menu, select **BGAN services > Telephony Settings**: (You can also click on **Advanced** in the Phone window). The Telephony Settings window displays.
- b. Select the **Call Barring** tab. The following window displays:



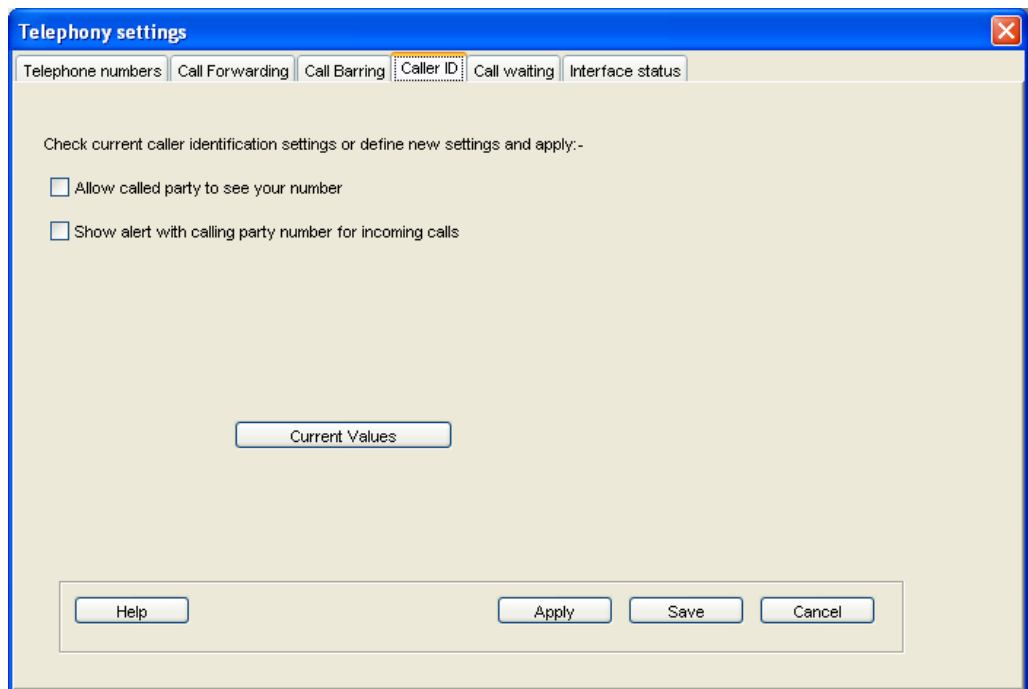
- c. In the **Telephone number** drop-down list, select the service on which you want to set up call barring: either **Voice**, **Data** or **Fax**.
- d. In the **Barring PIN** text box, enter the PIN supplied by your Service Provider. You cannot set up call barring options unless you enter the correct PIN.
- e. Check the check box if you want to activate a call barring service. If you choose **Cancel all call barring**, no other services are available to you. You must uncheck this box again to have access to the other services.
- f. If required, click on **Current Values** to display the current network settings for this service.
- g. Click on **Apply** to save the displayed configuration, and select another Phone settings tab, click on **Save** to save the displayed configuration and exit the Phone settings screen, or click on **Cancel** to exit without saving.

9 Setting up caller ID

You can enable caller ID if you want to see the number of an incoming caller, or allow a caller to see your number.

To set up caller ID:

- a. From the BGAN LaunchPad main menu, select **BGAN services > Telephony Settings**: (You can also click on **Advanced** in the Phone window). The Telephony Settings window displays.
- b. Select the **Call Barring** tab. The following window displays:



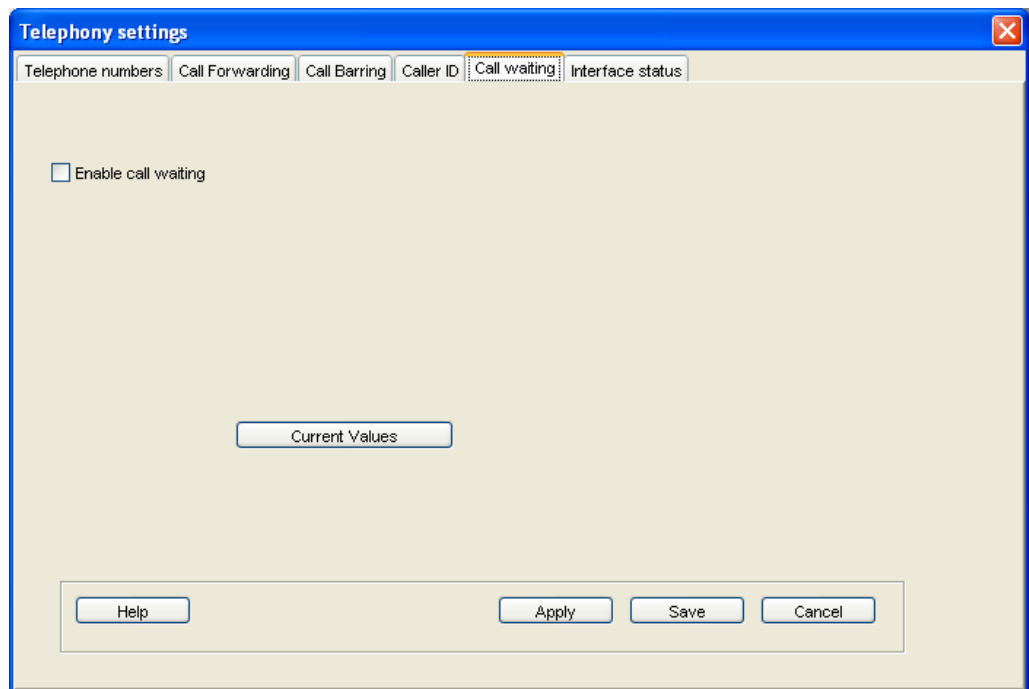
- c. Check the **Allow Called Party to see your number** check box if you want to allow the caller to see your number.
- d. Check the **Show alert with calling party number for incoming calls** check box if you want to see the number of an incoming caller.
- e. If required, click on **Current Values** to display the current network settings for this service.
- f. Click on **Apply** to save the displayed configuration, and select another Phone settings tab, click on **Save** to save the displayed configuration and exit the Phone settings screen, or click on **Cancel** to exit without saving.

10 Setting up call waiting

You can enable call waiting if you want to be notified that another caller is waiting which you are on a call.

To set up call waiting:

- a. From the BGAN LaunchPad main menu, select **BGAN services > Telephony Settings**: (You can also click on **Advanced** in the Phone window). The Telephony Settings window displays.
- b. Select the **Call Waiting** tab. The following window displays:

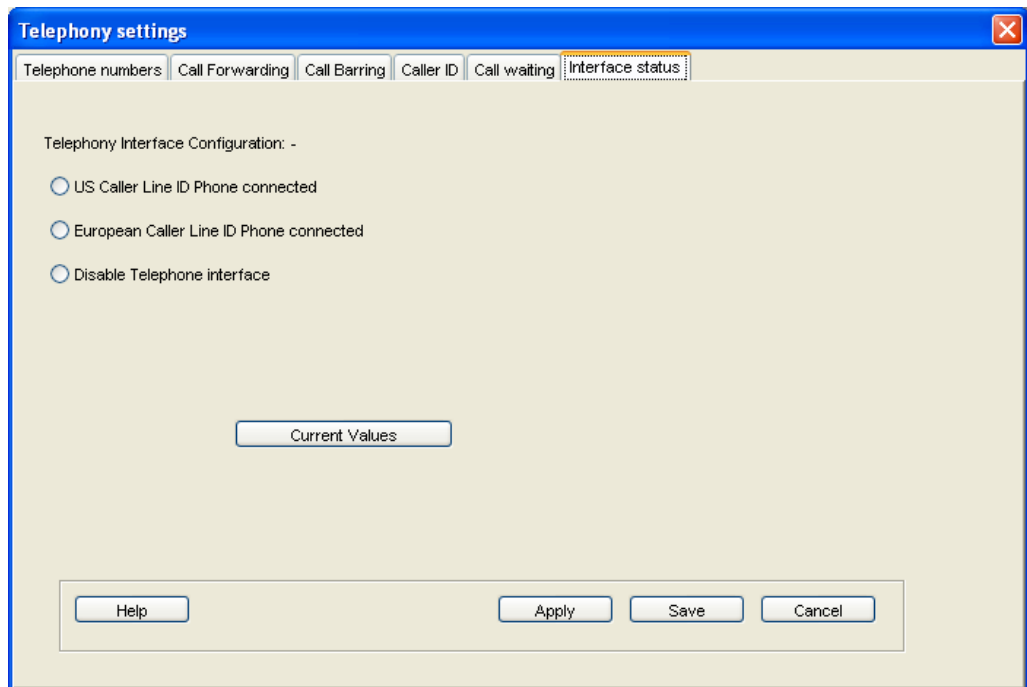


- c. Check the **Enable Call Waiting** check box to activate call waiting, or uncheck the check box to turn call waiting off.
- d. If required, click on **Current Values** to display the current network settings for this service.
- e. Click on **Apply** to save the displayed configuration, and select another Phone settings tab, click on **Save** to save the displayed configuration and exit the Phone settings screen, or click on **Cancel** to exit without saving.

11 Setting up interface status

You can set the telephone interface to US Caller Line ID, European Caller Line ID, or you can disable the telephone interface. To set the interface status:

- a. From the BGAN LaunchPad main menu, click on **BGAN Services > Telephony Settings** (or click on **Advanced** in the Phone window). The Telephony settings window displays.
- b. Click on **Interface Status**. The following window displays:



- c. Check the required radio button depending on whether you have a **US Caller Line ID Phone connected**, a **European Caller Line ID Phone connected**, or want to **Disable Telephone Interface**.
- d. If required, click on **Current Values** to display the current network settings for this service.
- e. Click on **Apply** to save the displayed configuration, and select another Phone settings tab, click on **Save** to save the displayed configuration and exit the Phone settings screen, or click on **Cancel** to exit without saving.