

# SatellitePhoneStore:

1-877-WHENEVER (943-6383)

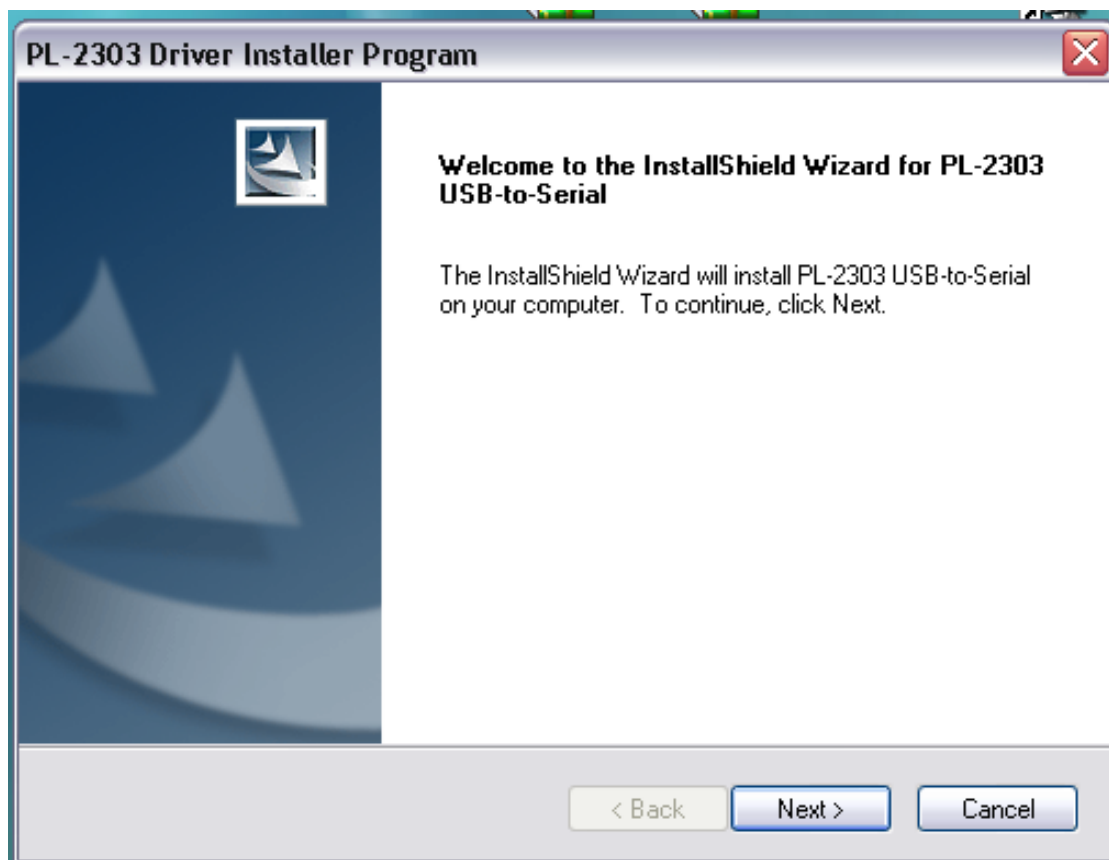
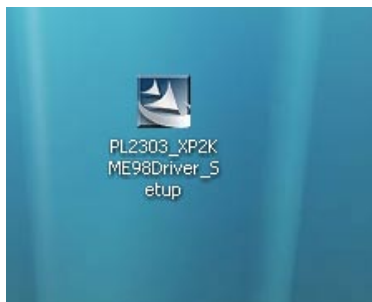


## Iridium Satellite Data Kit instructions for Windows XP

### FIRST STEP: Install the USB to Serial Adapter Drivers

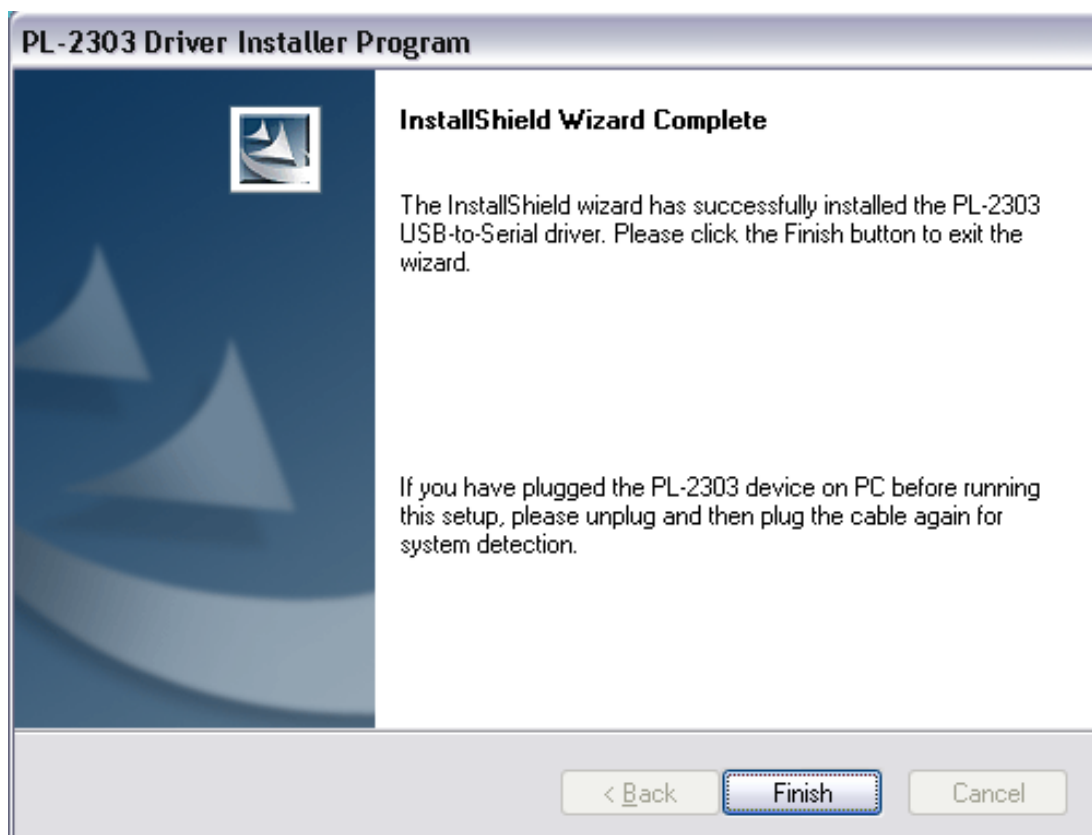
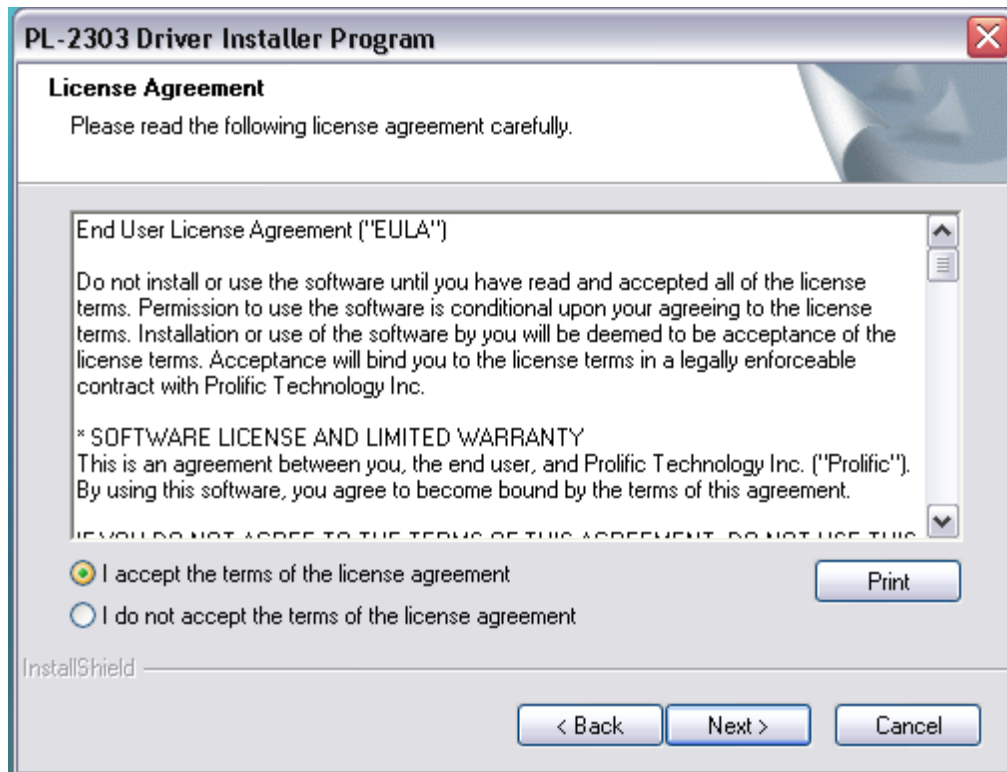
NOTE: Please install the USB to serial driver "PL-2303" before connecting any of the equipment.

Drag the PL2303 file from the CD to the Desktop, double click it and follow the on screen instructions.



# SatellitePhoneStore:

1-877-WHENEVER (943-6383)



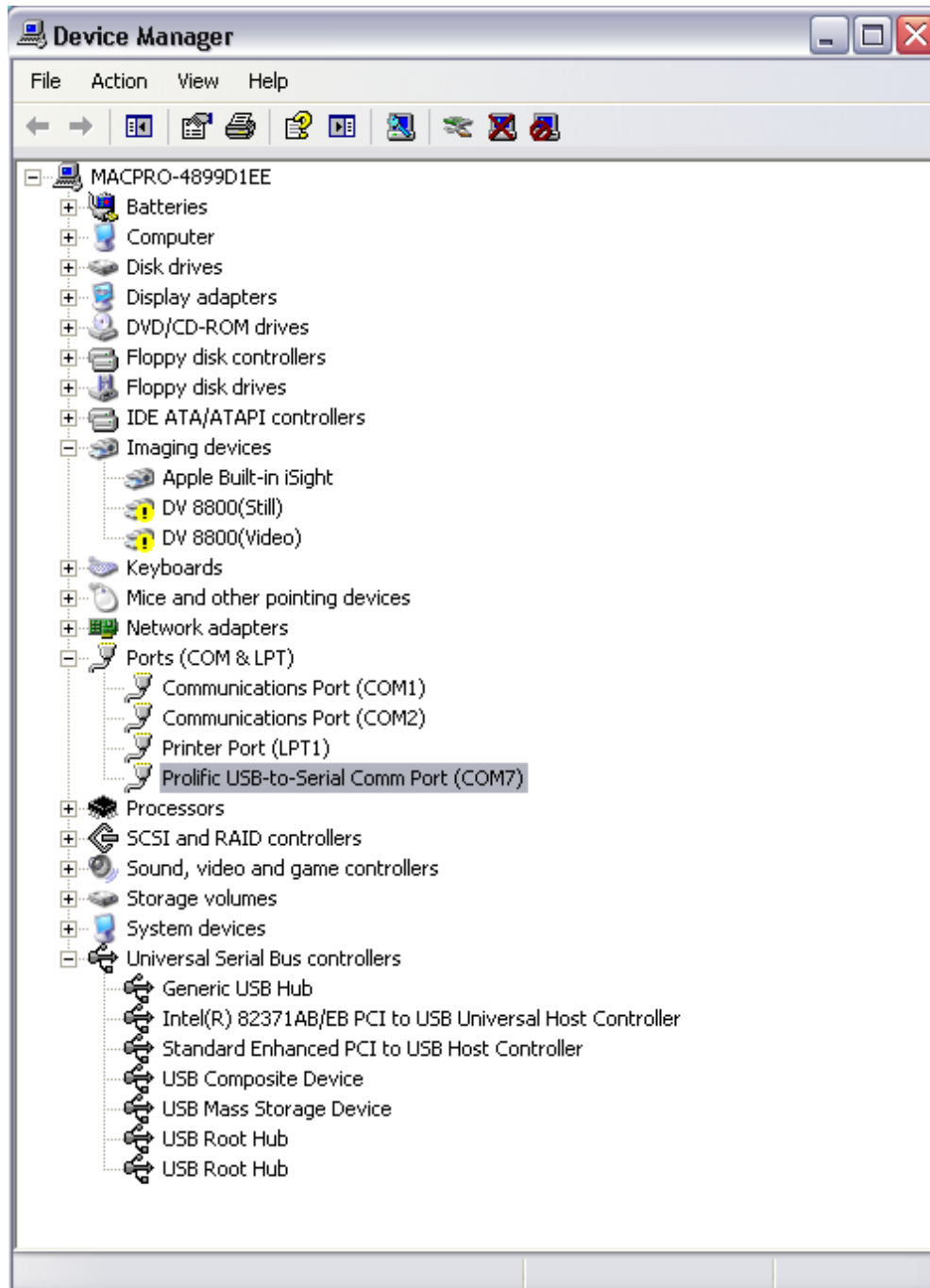
It is now safe to plug in the USB to Serial Cable; since the drivers are preinstalled Windows XP will recognize the device and prepare it for use.

# SatellitePhoneStore:

1-877-WHENEVER (943-6383)



To verify the adapter was installed correctly right click on the icon “My Computer” and select “Properties”. This will bring up the “System Properties” dialog box, from here select the “Hardware” tab and then the button “Device Manager”



In this example Windows XP has issued our “Prolific USB-to-Serial adapter” a communications port “COM7”. This confirms that the device is installed and ready for use with the Iridium Data Kit.

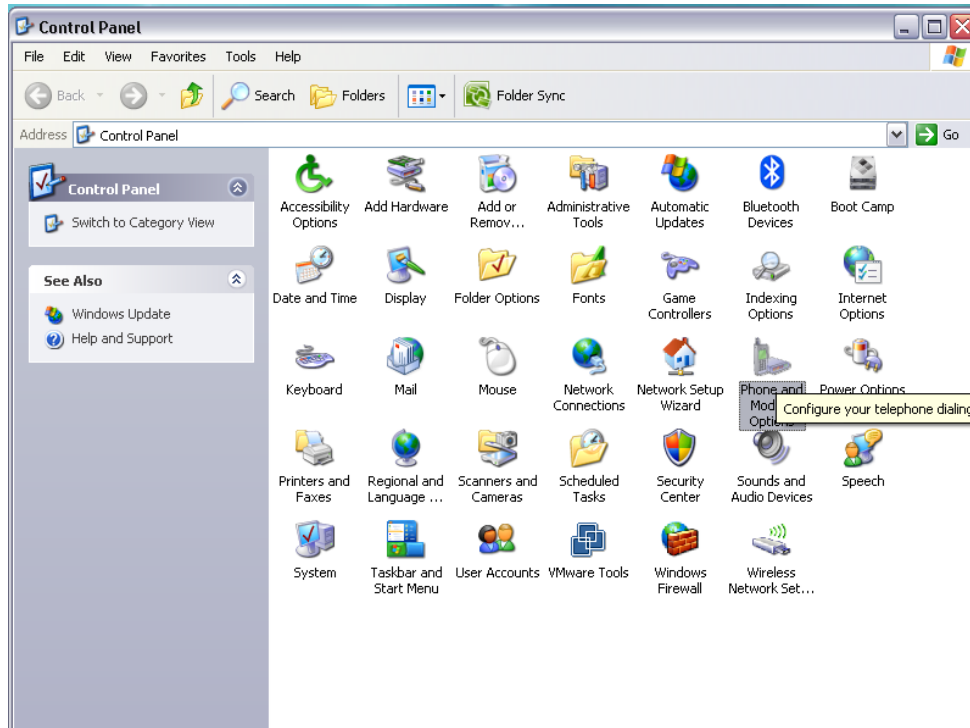
# SatellitePhoneStore:

1-877-WHENEVER (943-6383)



## STEP 2: SETUP A NEW MODEM

Click the “Start” menu button in windows and then select “Control Panel”.  
From the control panel open “Phone and Modem Options”

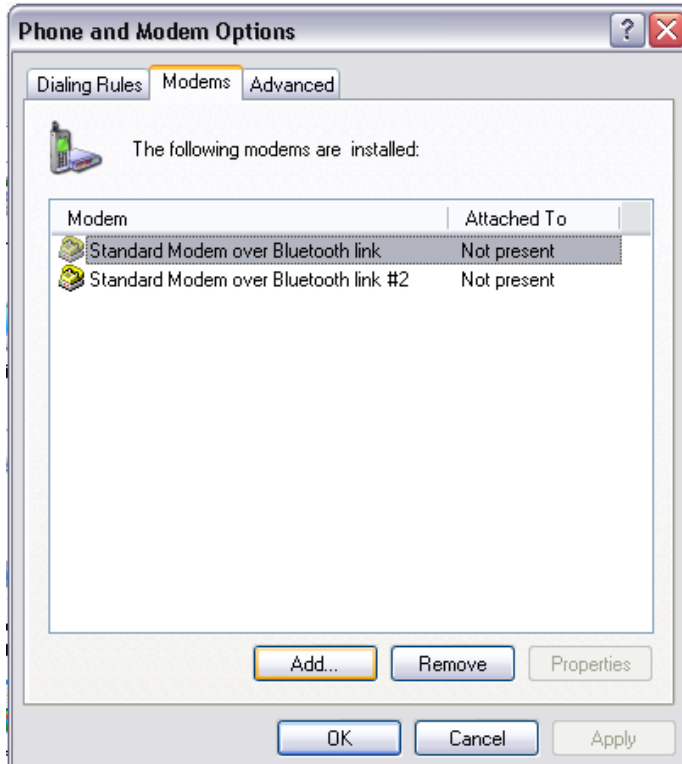


# SatellitePhoneStore:

1-877-WHENEVER (943-6383)



From the Phone and Modem Options dialog window select “Modems” and then click the “Add” button.



Check the box “Don’t detect my modem; I will select it from a list” and select “Next”.

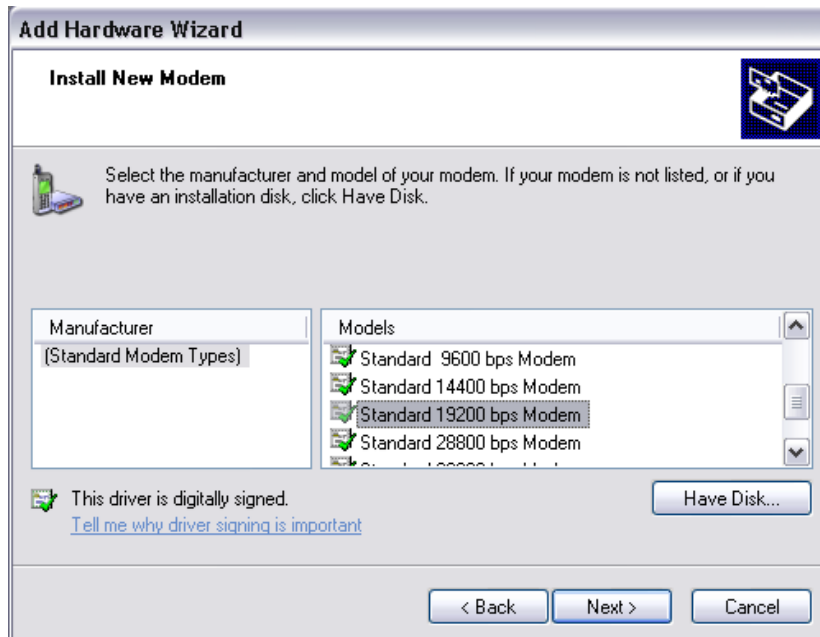


# SatellitePhoneStore:

1-877-WHENEVER (943-6383)



Select Standard Modem and choose Standard 19200 bps Modem.



Windows XP will now ask which COM port should be associated with our new modem. In our example we got issued COM7, every computer will be different so please refer to the device manager (PAGE 3) and then select "Next".

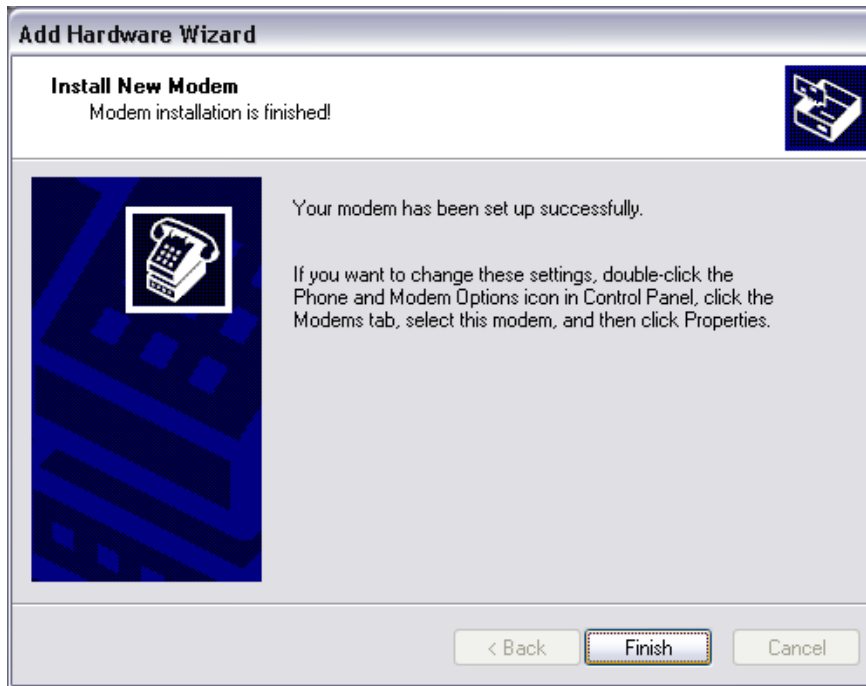


# SatellitePhoneStore:

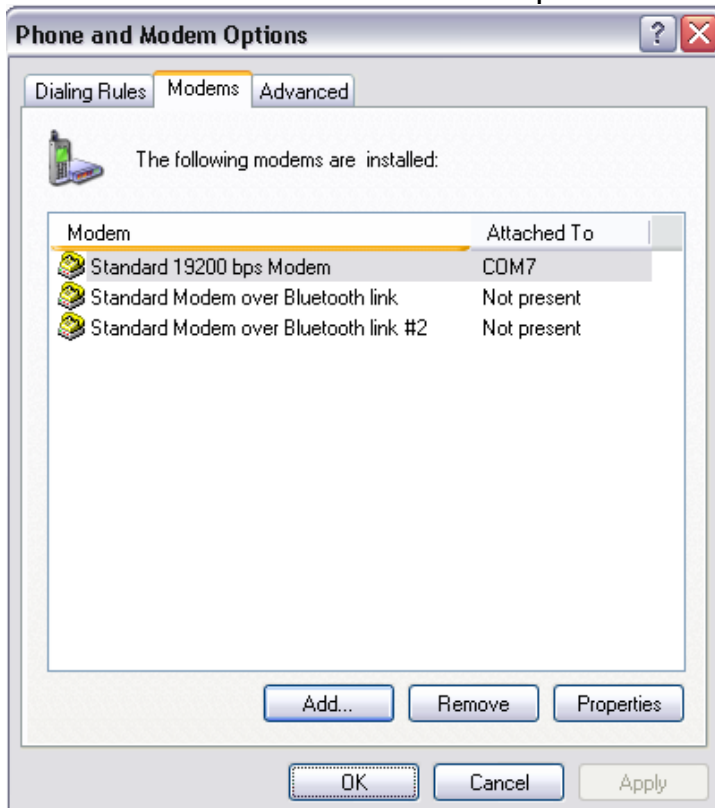
1-877-WHENEVER (943-6383)



Windows XP has setup our modem correctly, upon selecting “Finish” the new modem will display under “Phone and Modem Options”.



Notice the new “Standard 19200 bps Modem” assigned to COM 7.



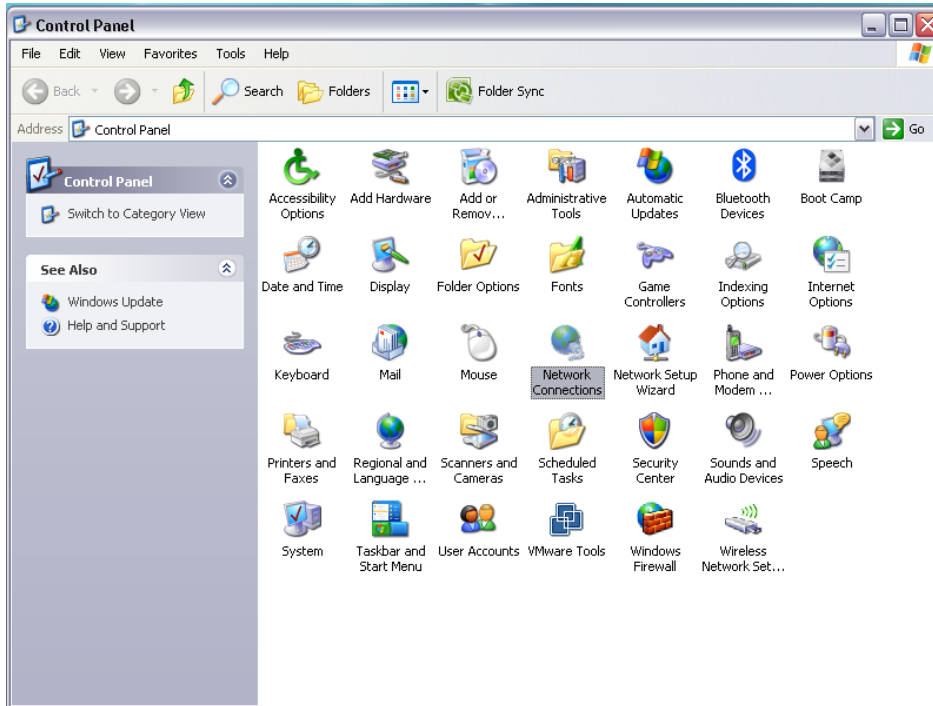
# SatellitePhoneStore:

1-877-WHENEVER (943-6383)

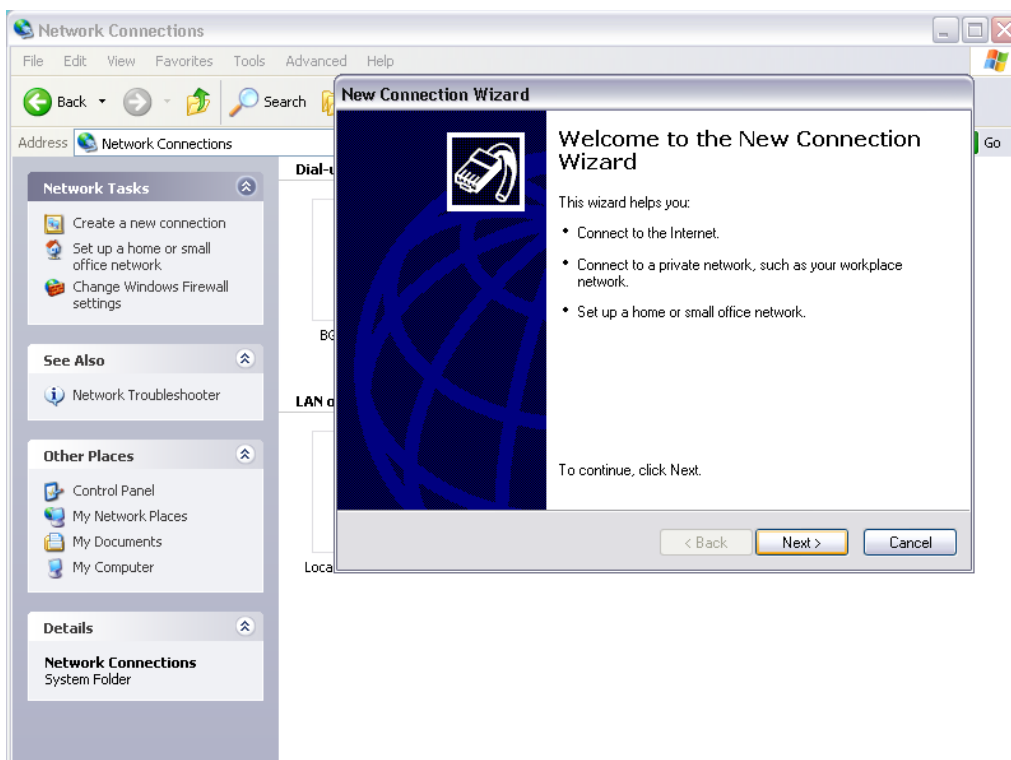


## STEP 3: SETUP A NEW DIAL-UP CONNECTION

Please return to Windows Control Panel and select "Network Connections". From the Network Connections window select "Create a new Connection"



Window's New Connection Wizard will guide us through setting up a new connection, select "Next".





# SatellitePhoneStore:


1-877-WHENEVER (943-6383)



Select “Connect to the Internet” and then click “Next”.

**New Connection Wizard**

**Network Connection Type**  
What do you want to do?




- Connect to the Internet**  
Connect to the Internet so you can browse the Web and read email.
- Connect to the network at my workplace**  
Connect to a business network (using dial-up or VPN) so you can work from home, a field office, or another location.
- Set up a home or small office network**  
Connect to an existing home or small office network or set up a new one.
- Set up an advanced connection**  
Connect directly to another computer using your serial, parallel, or infrared port, or set up this computer so that other computers can connect to it.

< Back   Next >   Cancel

Select “Setup my connection manually” and then click “Next”.

**New Connection Wizard**

**Getting Ready**  
The wizard is preparing to set up your Internet connection.



How do you want to connect to the Internet?

- Choose from a list of Internet service providers (ISPs)**
- Set up my connection manually**  
For a dial-up connection, you will need your account name, password, and a phone number for your ISP. For a broadband account, you won't need a phone number.
- Use the CD I got from an ISP**

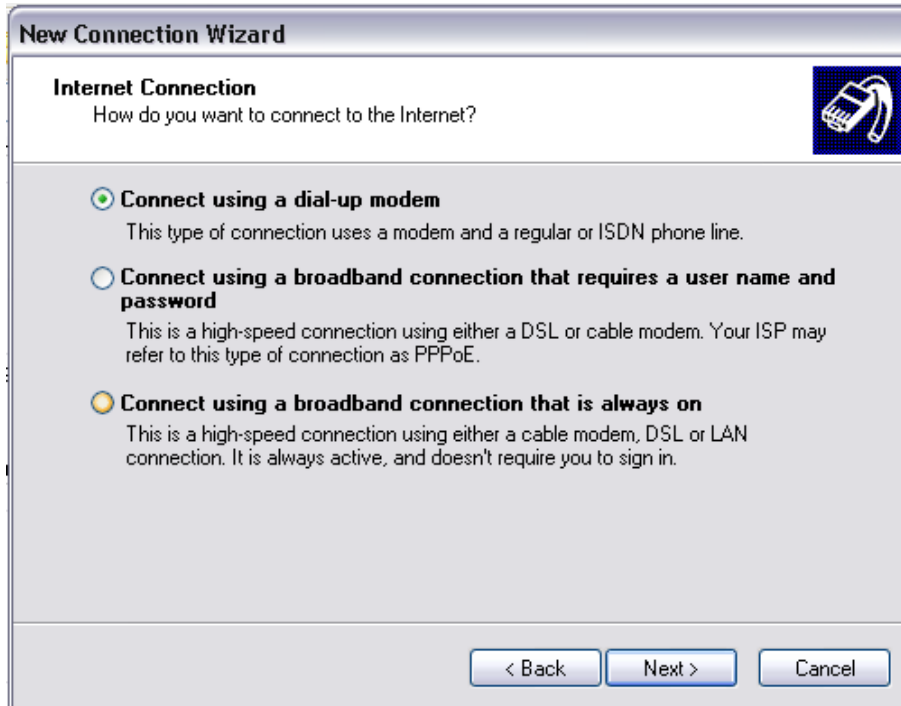
< Back   Next >   Cancel

# SatellitePhoneStore:

1-877-WHENEVER (943-6383)



Select “Connect using a dial-up modem” and then click “Next”.



Label the new connection “Iridium PPP” and select “Next”.

# SatellitePhoneStore:

1-877-WHENEVER (943-6383)



**New Connection Wizard**

**Connection Name**  
What is the name of the service that provides your Internet connection?

Type the name of your ISP in the following box.

ISP Name

The name you type here will be the name of the connection you are creating.

< Back   Next >   Cancel

Enter the Phone Number: "008816000025" and select "Next".

**New Connection Wizard**

**Phone Number to Dial**  
What is your ISP's phone number?

Type the phone number below.

Phone number:

You might need to include a "1" or the area code, or both. If you are not sure you need the extra numbers, dial the phone number on your telephone. If you hear a modem sound, the number dialed is correct.

< Back   Next >   Cancel

# SatellitePhoneStore:

1-877-WHENEVER (943-6383)



Please leave all Account Information BLANK and then select “Next”.

**New Connection Wizard**

**Internet Account Information**  
You will need an account name and password to sign in to your Internet account.

Type an ISP account name and password, then write down this information and store it in a safe place. (If you have forgotten an existing account name or password, contact your ISP.)

User name:

Password:

Confirm password:

Use this account name and password when anyone connects to the Internet from this computer

Make this the default Internet connection

< Back   Next >   Cancel

Select “Add a shortcut to this connection to my desktop” and click “Finish”.

**New Connection Wizard**

**Completing the New Connection Wizard**

You have successfully completed the steps needed to create the following connection:

**Iridium PPP**

- Share with all users of this computer
- Use the same user name & password for everyone

The connection will be saved in the Network Connections folder.

Add a shortcut to this connection to my desktop

To create the connection and close this wizard, click Finish.

< Back   Finish   Cancel

## STEP 4: DIAL THE CONNECTION

# SatellitePhoneStore:

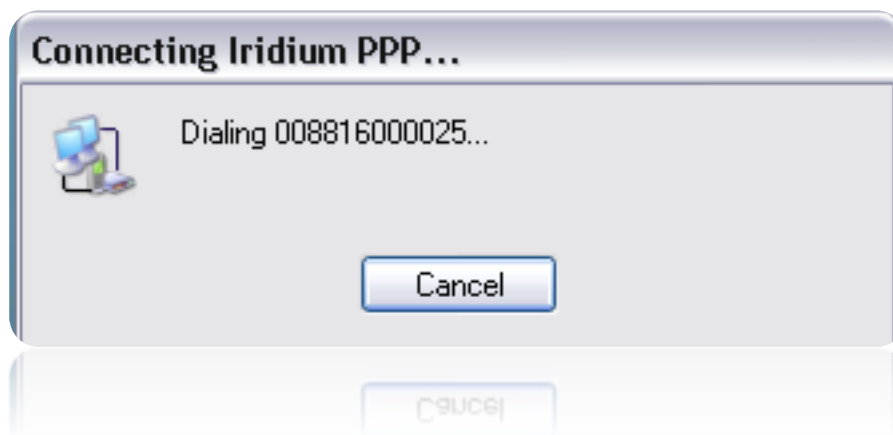
1-877-WHENEVER (943-6383)



Double click the new icon on the desktop "Iridium PPP" and select "Dial".

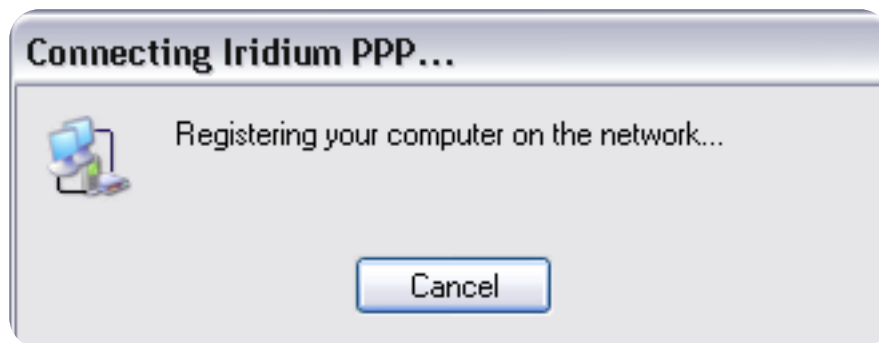


Windows will return the following screens:



**SatellitePhoneStore:**

1-877-WHENEVER (943-6383)



The Iridium Satellite Dial-Up Data connection is now ready for internet access.

**NOTICE TO ALL CUSTOMERS:**

If at any point in the connection process you run into errors please don't hesitate to contact Customer Service:

[Customer\\_care@satellitephonestore.com](mailto:Customer_care@satellitephonestore.com)

+1 941 955 1020 or +1 877 943 6383