



Kymeta Product Weights and Dimensions Guide

740-00008-000-rev02

05 September 2018

Table of contents

- 1 About this document..... 1
- 2 Kymeta™ KyWay™ terminal and mTenna^{u7} ASM part numbers, including pallet and “No Stack” cone. 1
- 3 Accessory part numbers individual shipment specifications..... 2
- 4 Pallet configurations 3
 - 4.1 One KyWay terminal pallet configuration..... 3
 - 4.2 Two KyWay terminal pallet configuration..... 4
- 5 Revision history 5
- 6 Legal information..... 5

Figures

- Figure 1: 800-00007 / 800-00009 one KyWay terminal pallet configuration 3
- Figure 2: 800-00007 / 800-00009 two KyWay terminal pallet configuration 4

Tables

- Table 1: Kymeta™ KyWay™ terminal and mTennau7 ASM weight and dimensions 1
- Table 2: Accessory weight and dimensions 2

1 About this document

This document lists the standard weights and dimensions for Kymeta products for use in quoting freight and logistics.

Unless otherwise indicated, the pick-up or ship from location to reference is **Milpitas, CA 95035 USA**.

2 Kymeta™ KyWay™ terminal and mTenna^{U7} ASM part numbers, including pallet and “No Stack” cone

Table 1: Kymeta™ KyWay™ terminal and mTenna^{U7} ASM weight and dimensions

Product Code	Description	Multiple	Dimensions LxWxH	Weight
800-00003	MTENNA U7 ASM, I/O BOX, DIPLEXER, INTERFACE CABLE	1	101.6 cm x 121.9 cm x 83.8 cm 40 in. x 48 in. x 33 in.	47.6 kg 105 lbs.
800-00007	KYWAY U7 8W TERMINAL, WITH MODEM	1	101.6 cm x 121.9 cm x 106.7 cm 40 in. x 48 in. x 42 in.	61.2 kg 135 lbs.
800-00007	KYWAY U7 8W TERMINAL, WITH MODEM	2	101.6 cm x 121.9 cm x 147.32 cm 40 in. x 48 in. x 58 in.	104.3 kg 230 lbs.
800-00009	KYWAY U7 16W TERMINAL, WITH MODEM	1	101.6 cm x 121.9 cm x 106.7 cm 40 in. x 48 in. x 42 in.	59.0 kg 130 lbs.
800-00009	KYWAY U7 16W TERMINAL, WITH MODEM	2	101.6 cm x 121.9 cm x 147.32 cm 40 in. x 48 in. x 58 in.	104.3 kg 230 lbs.
800-00011	KYWAY U7 8W TERMINAL, CUSTOMER PROVIDED MODEM	1	101.6 cm x 121.9 cm x 88.9 cm 40 in. x 48 in. x 35 in.	54.4 kg 120 lbs.
800-00011	KYWAY U7 8W TERMINAL, CUSTOMER PROVIDED MODEM	2	101.6 cm x 121.9 cm x 139.7 cm 40 in. x 48 in. x 55 in.	90.7 kg 200 lbs.
800-00012	KYWAY U7 16W TERMINAL, CUSTOMER PROVIDED MODEM	1	101.6 cm x 121.9 cm x 88.9 cm 40 in. x 48 in. x 35 in.	54.4 kg 120 lbs.
800-00012	KYWAY U7 16W TERMINAL, CUSTOMER PROVIDED MODEM	2	101.6 cm x 121.9 cm x 139.7 cm 40 in. x 48 in. x 55 in.	90.7 kg 200 lbs.

3 Accessory part numbers individual shipment specifications

Table 2: Accessory weight and dimensions

Product Code	Description	Multiple	Dimensions LxWxH	Weight
100-00007	KIT, CABLE, KYWAY, RX-TX, LMR-240, 3.66M LENGTH	1	46.4 cm x 49.9 cm x 15.2 cm 18.25 in. x 19.25 in. x 6 in.	1.8 kg 4 lbs.
100-00008	KIT, CABLE, KYWAY, RX-TX, LMR-240, 7.62M LENGTH	1	46.4 cm x 49.9 cm x 15.2 cm 18.25 in. x 19.25 in. x 6 in.	2.3 kg 5 lbs.
100-00009	KIT, CABLE, KYWAY, RX-TX, LMR-240, 15.24M LENGTH	1	46.4 cm x 48.3 cm x 15.2 cm 18.25 in. x 19 in. x 6 in.	3.2 kg 7 lbs.
100-00016	CABLE, KYWAY, INTERFACE, 3.66M LENGTH	1	32.4 cm x 32.4 cm x 5.7 cm 12.75 in. x 12.75 in. x 2.25 in.	1.4 kg 3 lbs.
100-00017	CABLE, KYWAY, INTERFACE, 7.62M LENGTH	1	48.3 cm x 48.3 cm x 5.7 cm 19 in. x 19 in. x 2.25 in.	2.3 kg 5 lbs.
100-00018	CABLE, KYWAY, INTERFACE, 15.24M LENGTH	1	48.3 cm x 48.3 cm x 5.7 cm 19 in. x 19 in. x 2.25 in.	4.1 kg 9 lbs.
400-00004	BUC, 8W, UNIVERSAL KU SERIES, NJRC	1	25.4 cm x 20.3 cm x 15.2 cm 10 in. x 8 in. x 6 in.	2.7 kg 6 lbs.
400-00005	BUC, 16W, UNIVERSAL KU SERIES, NJRC	1	25.4 cm x 20.3 cm x 15.2 cm 10 in. x 8 in. x 6 in.	2.7 kg 6 lbs.
400-00006	LNB, UNIVERSAL KU, N TYPE CONNECTOR, NJRC	1	30.8 cm x 20.3 cm x 16.5 cm 12 in. x 8 in. x 6.5 in.	0.45 kg 1 lb.
400-00007	DIPLEXER, KU, ODU	1	32.4 cm x 11.4 cm x 10.8 cm 12.75 in. x 4.5 in. x 4.25 in.	0.45 kg 1 lb.
400-00008	I/O BOX, AC POWER	1	60.9 cm x 35.6 cm x 19.1 cm 24 in. x 14 in. x 7.5 in.	3.6 kg 8 lbs.
400-00009	MODEM, KU-BAND, AC POWER, IDIRECT X7	1	58.4 cm x 43.2 cm x 13.9 cm 23 in. x 17 in. x 5.5 in.	5.9 kg 13 lbs.

4 Pallet configurations

4.1 One KyWay terminal pallet configuration



Figure 1: 800-00007 / 800-00009 one KyWay terminal pallet configuration

4.2 Two KyWay terminal pallet configuration

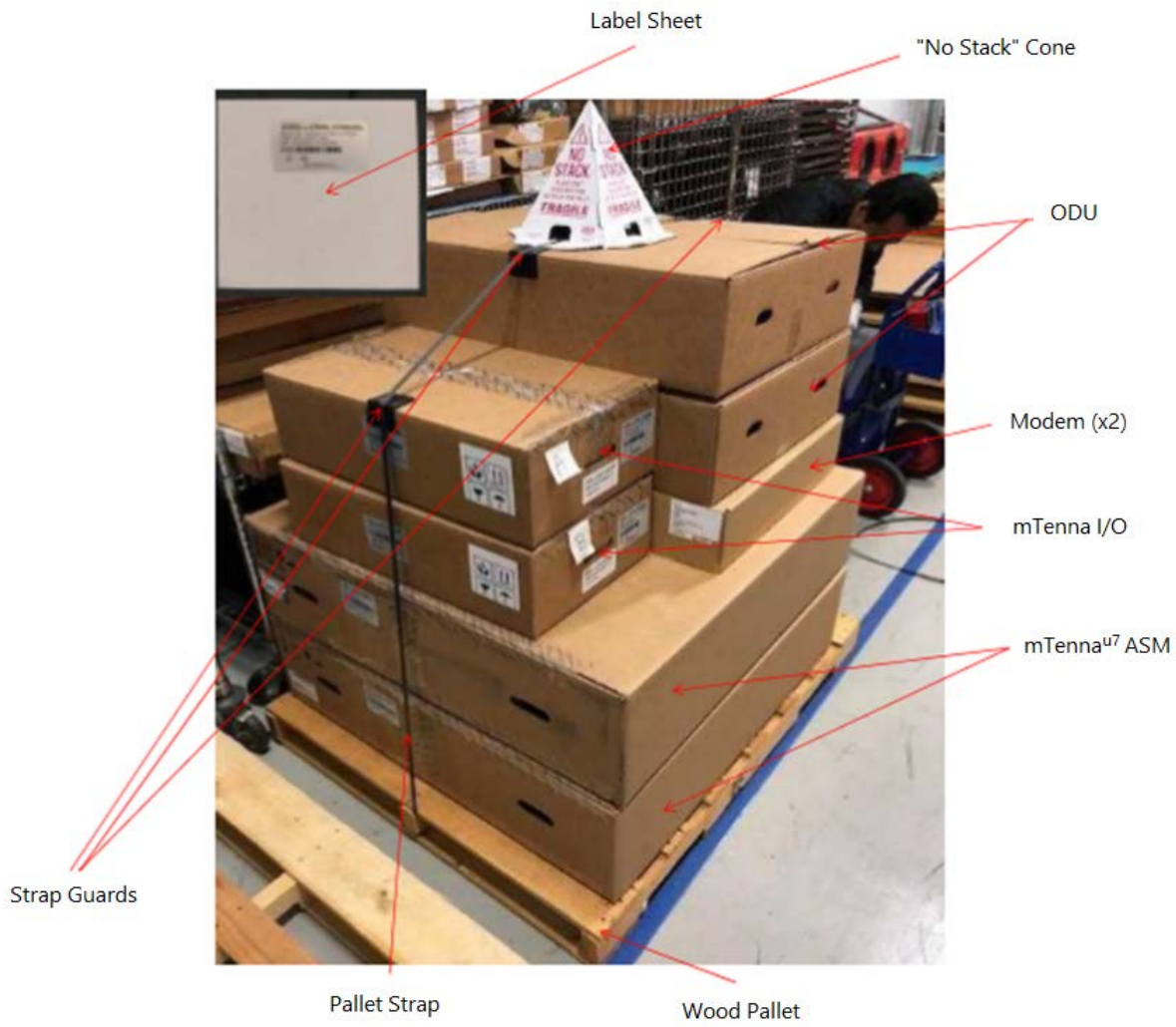


Figure 2: 800-00007 / 800-00009 two KyWay terminal pallet configuration

5 Revision history

Revision	Change
01	Initial release.
02	Updated the pick-up or ship from address.

6 Legal information

© 2018 Kymeta Corporation and its affiliates. KYMETA, CONNECTED BY KYMETA, MTENNA, KYWAY, KĀLO image, and KĀLO are trademarks of Kymeta Corporation, with registrations or pending applications for these marks in Brazil, the European Union, Japan, Norway, Singapore, South Korea, and the United States.

All other trademarks are the property of their respective owners.