

SKYLINK BATTERY PACK

QUICK START GUIDE

PLEASE READ BEFORE DEPLOYMENT

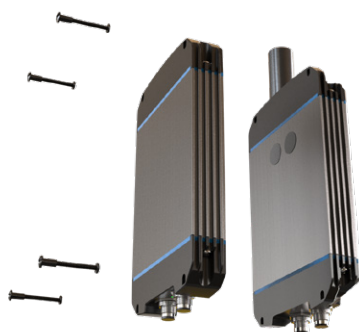


Blue Sky Network 

SKYLINK BATTERY PACK QUICK START GUIDE

STEP 1: ATTACH THE BATTERY

Bolt the SkyLink Battery Pack to the SkyLink Data Gateway. A permanent installation it can be through mounted to a post using the Data Gateway mounting bracket, or by screwing it to a wall.



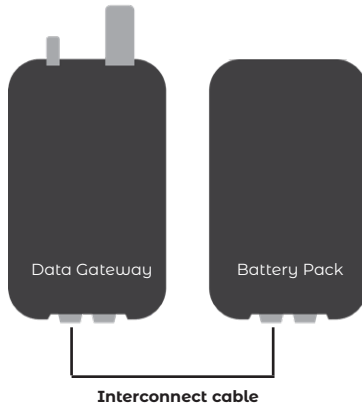
STEP 2: ATTACH THE INTERCONNECT CABLE

Connect the interconnect cable between the Battery Pack and the Data Gateway. There is one standard interconnect cable and three optional cables:

1. Standard 6" interconnect cable, PN 300697-1
2. Optional 72" interconnect cable, PN 300697-2
3. Optional 6" interconnect cable & Ethernet cable, PN 300697E-1
4. Optional 72" interconnect cable & Ethernet cable, PN 300697E-2



The interconnect cable connects to the left-hand connector of the Data Gateway and the left-hand connector of the Battery Pack when looking at the front of both units.



STEP 3: ATTACH THE POWER INPUT CABLE

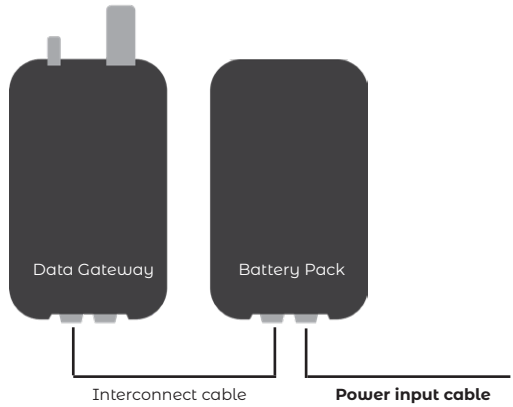
Connect the power input cable to the right-hand connector on the Battery Pack. for mobile use, this is a temporary connection to charge the battery and a permanent connection for fixed installations. There standard cable has an AC adapter and there is an optional DC cable:

1. Standard power input cable, PN 300698-AC
2. Optional power input cable, PN 300698-DC

Questions? Contact us at support@blueskynetwork.com

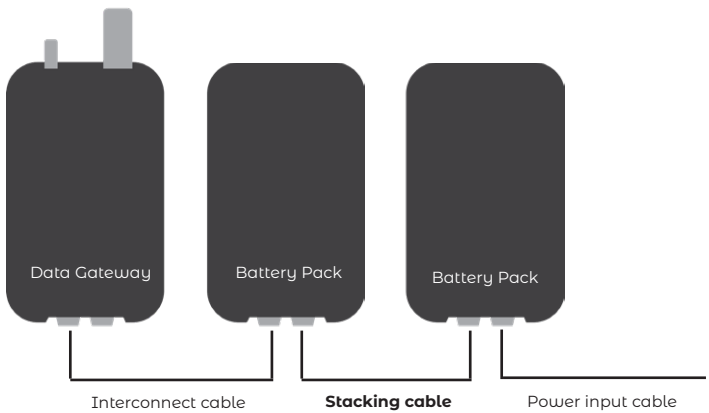
+1 858-551-3894

SKYLINK BATTERY PACK QUICK START GUIDE



BATTERY STACKING

To stack batteries, use the battery stacking cable, PN 300699, as shown below:



www.blueskynetwork.com

SKYLINK-BATTERY-PACK-QUICK_START_GUIDE-V1.0
For customer use only. Not intended for further distribution.