



 **GSatTrack**

GSatTrack

Monitor. Manage. Maximize



Connecting the World, Empowering Your Enterprise



www.connectasat.com



www.connectasat.com

Universal Tracking Solution

Web-based satellite and GSM tracking solution

GSatTrack is a web based integrated satellite and GSM tracking solution, compatible with modern web browsers and works on a multilingual platform that brings together all the positions of every manufactured product under one location and displays and manages them in a single unified interface. With GSatTrack, asset locations and movements - including position, speed, altitude and heading - are tracked in real-time worldwide via GPS updates.

By using GPS satellites with the latest hardware and technology, you can now track any asset on earth, whether it's people, vehicles, containers, or any moving object! Our technology allows you to merge together all types of tracking equipment into one easy to use platform. The tracking equipment determines its location by triangulating a position using GPS (Global Positioning System) and then transmits this information via GSM, Satellite, or VHF to a central server for processing. Any operator can view and control any number of real time assets simultaneously.

It's never been so easy to track your personnel, vehicle or assets, wherever they are!

Markets

- ✔ Aerospace
- ✔ Encrypted Government Tracking
- ✔ SCADA Services
- ✔ Broadcasting
- ✔ Fleet Management
- ✔ Security Services
- ✔ Construction
- ✔ Fuel Monitoring & Logistics
- ✔ Soldier Tracking
- ✔ Container Tracking
- ✔ Oil & Gas Operations
- ✔ Vessel Tracking
- ✔ Electronic Driver Log Compliance
- ✔ Recreational
- ✔ Custom Tracking Solutions
- ✔ Emergency Management

Global Reach

Satellite

Locating assets anywhere in the world is now completely at reach. Satellite communication networks give visibility of assets in areas where GSM coverage is not received. Covering land and sea from pole to pole, satellites can provide a truly global reach.

GSM

GSM provides optimal coverage in urban land areas where satellite signals can be deterred by urban construction. Cellular coverage is the most popular tracking solution when operating in populated areas.

Hybrid solutions

Customizing solutions for ideal visibility of assets is easily attained. Multiple coverage options will allow for the creation of optimal solutions that will provide the coverage that will meet the needs of our customers, as well as their budgets.



Speed

Load tested to handle over 36,000 positions from over 400 tracking units in just 35 seconds



Versatility

Capable of tracking any unit in the world on any network through a single interface



Usability

Multilingual support across multiple platforms without any software installation



Customizable

Easily customized that includes Whitelabel and Reseller Options

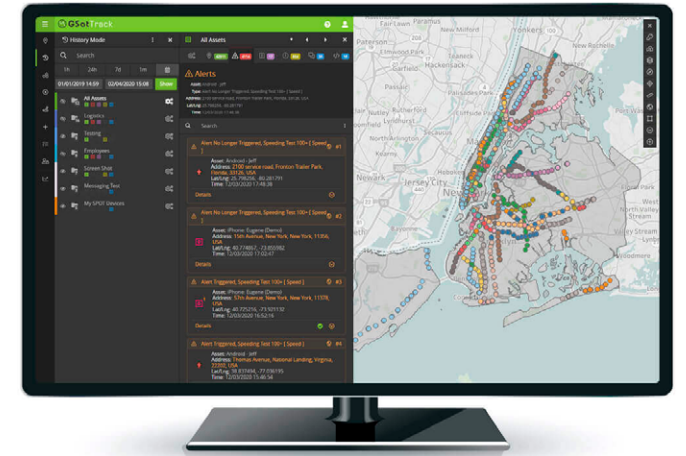


Easy to use

Utilizes a simple, browser safe interface that never needs to be upgraded or patched

Features

- Live Update (No refresh times)
- Utilize almost any tracking hardware
- Multilingual & Multi-Platform
- Geo-Fencing
- Remote Configuration
- Advanced alerts and event triggers
- Seamless ongoing software upgrades
- Alert Acknowledgement
- Unlimited History
- User Management
- Anonymous Users
- Custom View (i.e. Embedded view)
- Places and Group Management
- Two-Way Messaging
- Message Routing
- Messaging Encryption
- Alert Email Encryption (OpenPGP)
- Alert SMS Notification
- Waypoints
- Driver Assignment/ Auditing
- I/O Mapping
- Fuel Logging
- Service Meter Logging
- OBDII Logging
- Garmin Integration
- Status Auditing
- Earth API (KML)
- Automated Flight Following API (AFF)
- Address Books (NAL)
- Messages (NAL)
- Reporting
- Asset Icons
- Position, speed, altitude & heading
- Custom Map Support
- Managed Secure Hosting
- White Label Options
- + More



Get connected

Satellite Coverage

The GSatSolar is a satellite terminal, which is a critically important piece of its ability to deliver IoT and remote range functionality. Most low-cost trackers that exist for small assets are not capable of reporting outside of terrestrial network range, and the GSatSolar leverages the Globalstar satellite network for off-grid solutions. Anywhere a GSatSolar can see the sun and a Globalstar satellite, asset managers can track their unit.



*Coverage map as of July 2023. Coverage may change at any time.

Whether you're part of a global enterprise or have a small company, we can help you strengthen your business with the power of satellite connectivity.

Get started today.