

Introduction

This product is a well-designed portable power bank with high capacity transmitting terminal of wired & wireless charging, which supports simultaneous wired charging of up to 2 devices or wireless charging of 1 device only. It enables uninterrupted device charging and activity, providing dual-way Type-C charging and safety protections (over-current, over-voltage, over-temperature, short circuit and more) for your charging service.

What's In The Box

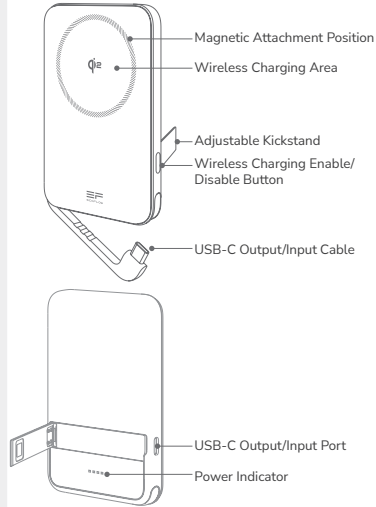


Power Bank

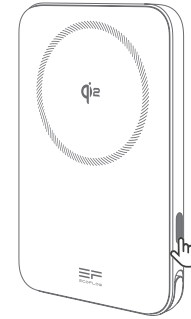


Quick Start Guide & Warranty Card

Appearance

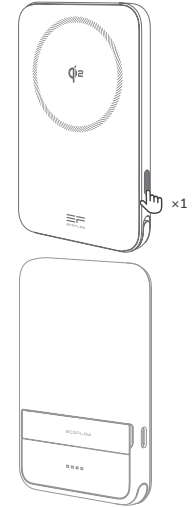


Wireless Charging Enable / Disable




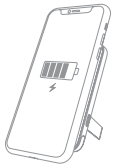
ENABLE / DISABLE  x2

Battery Level Check




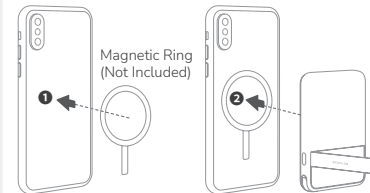
Qi2 Wireless Charging (For iOS devices)

 Qi2 wireless charging only applies to iPhone 12 series and above.

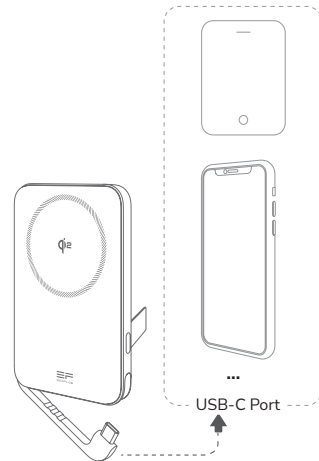


Qi2 Wireless Charging (For Android devices)

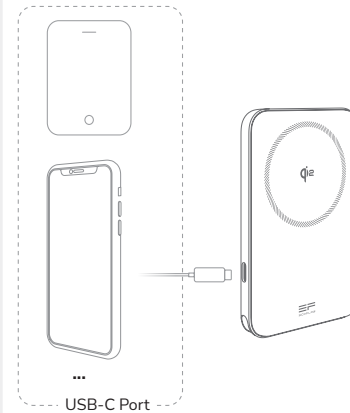
 Only applies to smartphones equipped with Qi2 Wireless Charging Function.



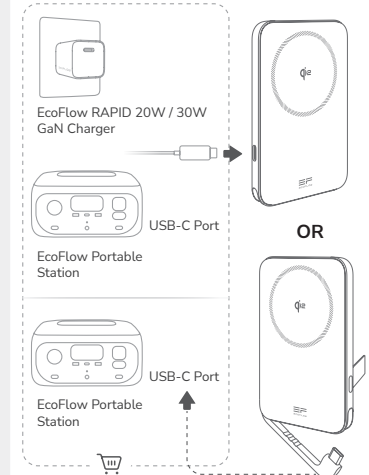
Use USB-C cable to charge your mobile phones or other digital device



Use USB-C port to charge your mobile phones or other digital device



Recharge your power bank via USB-C port or USB-C cable



General Safety Instructions

- Due to efficiency of power bank conversion, the actual capacity is less than rated battery capacity.
- Use the product as operation instructions in this user manual. Improper use can cause damage to the product or may endanger personal and property.
- Check and make sure the charging voltage of your digital device is consistent with the voltage output of your power bank.
- Select and use the original charging cable of your digital device.
- Please recharge your power bank regularly in order to prolong its service life.
- CAUTION: Risk of Fire and Burns. Do Not Open, Crush, Heat or Incinerate.
- Do not use power bank that has been soaked in water. Contact a battery recycling company for disposal.
- Keep the product away from water, fire and heat sources.
- This product is not a toy, please keep it out of children's reach. Children shall not play with the appliance.
- If this product has obvious deformation, leakage or damage, stop using it immediately,

IC STATEMENT

This device contains license-exempt transmitter(s)/receiver(s) that comply with Innovation, Science and Economic Development Canada's license-exempt RSS(s). Operation is subject to the following two conditions:

- (1) This device may not cause interference.
- (2) This device must accept any interference, including interference that may cause undesired operation of the device.

This Class B digital apparatus complies with Canadian ICES-003.

DISPOSAL

For information on the disposal of electrical and electronic equipment, please visit the following website:
<https://eu.ecoflow.com/pages/electronic-devices-disposal>



- and contact a recycling company for disposal.
- This product does not contain any user-serviceable parts and the battery is not replaceable.

Battery Safety

- Placing the battery in a fire or heating oven, or treating the battery by mechanical squeezing or cutting may cause an explosion.
- Placing the battery in an environment with extremely high temperatures or low air pressure may result in an explosion or leakage of flammable liquids or gases.

FCC STATEMENT

This device complies with part 15 of the FCC Rules. Operation is subject to the following two conditions:

- (1) This device may not cause harmful interference, and
- (2) This device must accept any interference received, including interference that may cause undesired operation.

Note:

This equipment has been tested and found to

comply with the limits for a Class B digital device, pursuant to part 15 of the FCC Rules. These limits are designed to provide reasonable protection against harmful interference in a residential installation. This equipment generates uses and can radiate radio frequency energy and, if not installed and used in accordance with the instructions, may cause harmful interference to radio communications. However, there is no guarantee that interference will not occur in a particular installation. If this equipment does cause harmful interference to radio or television reception, which can be determined by turning the equipment off and on, the user is encouraged to try to correct the interference by one or more of the following measures:

- Reorient or relocate the receiving antenna.
- Increase the separation between the equipment and receiver.
- Connect the equipment into an outlet on a circuit different from that to which the receiver is connected.
- Consult the dealer or an experienced radio/TV technician for help.

This equipment complies with FCC radiation exposure limits set forth for an uncontrolled environment.

EcoFlow RAPID Magnetic Power Bank (5000mAh)

IMPORTANT:

Read this user manual before use and keep it for future reference.

This marking indicates that this product should not be disposed of with other household waste within the EU. Recycle this product properly to prevent possible damage to the environment or a risk to human health via uncontrolled waste disposal and in order to promote the sustainable reuse of material resources. Please return your used product to an appropriate collection point or contact the retailer where you purchased this product. Your retailer will accept used products and return them to an environmentally-sound recycling facility.



Hereby, EcoFlow Inc. declares that the radio equipment type RAPID Magnetic Power Bank is in compliance with Directive 2014/53/EU. The full text of the EU declaration of conformity is available at the following Internet address:

eu: <http://www.ecoflow.com/eu/eu-compliance>
de: <http://www.ecoflow.com/de/eu-compliance>
fr: <http://www.ecoflow.com/fr/eu-compliance>

Technical Parameters

Model	EFPB503-5K
General Specifications	
Dimensions (WxDxH) (mm)	70 x 108 x 14.4
Weight (g)	180
Environment	
Charging Temperature (°C)	0 to 40
Discharging Temperature (°C)	-10 to 40
Storage Temperature (°C)	-20 to 40
Altitude (m)	≤3000
Battery Info	
Battery Type	Secondary lithium-ion battery
Battery Capacity	5000mAh (2500mAh*2pcs)
Lithium Battery Energy	2500mAh 7.74V/19.35Wh
Rated Capacity	3200mAh 5V=2.4A
Input/Output	
USB-C Input Port	5V=3A, 9V=3A, 12V=2.5A, 15V=2A
USB-C Input Cable	
USB-C Output Port	5V=2.4A, 9V=3A, 12V=2.5A, 15V=2A
USB-C Output Cable	
Wireless Output	15W Max
Total Output	5V=2.4A (12W Max)

